



## Phylogenetic analysis of Gondwanan basal eusauropods from the Early-Middle Jurassic of Patagonia, Argentina

Femke M. HOLWERDA<sup>1,2,\*</sup> & Diego POL<sup>3,4</sup>

<sup>1</sup> Staatliche Naturwissenschaftliche Sammlungen Bayerns (SNSB), Bayerische Staatssammlung für Paläontologie und Geologie, Ludwig-Maximilians-University Munich, Department for Earth and Environmental Sciences, Richard-Wagner-Strasse 10, 80333 München, Germany

<sup>2</sup> Faculty of Geosciences, Utrecht University, Heidelberglaan 2, 3584 CS Utrecht, The Netherlands; f.m.holwerda@gmail.com

<sup>3</sup> Consejo Nacional de Investigaciones Científicas y Técnicas (CONICET), Argentina

<sup>4</sup> Museo Paleontológico Egidio Feruglio, Avenida Fontana 140, Trelew, Argentina; dpol@mef.org.ar

\* Corresponding author

Holwerda, F.M. & Pol, D. 2018. Phylogenetic analysis of Gondwanan basal eusauropods from the Early-Middle Jurassic of Patagonia, Argentina. [Análisis filogenético de eusaurópodos basales de Gondwana del Jurásico Inferior–Medio de Patagonia, Argentina]. *Spanish Journal of Palaeontology*, 33 (2), 289-298.

Manuscript received 20 December 2017

Manuscript accepted 9 July 2018

© Sociedad Española de Paleontología ISSN 2255-0550

### ABSTRACT

Gondwanan Jurassic non-neosauropod eusauropods are key for the understanding of sauropod evolution, although their phylogenetic interrelationships remain poorly understood. However, following the revision of the holotype of a key taxon from the early Middle Jurassic Cañadón Asfalto Formation Patagonia, Argentina, *Patagosaurus fariasi*, the phylogenetic affinities need to be tested with new osteological information gathered during the redescription of the holotype of *Patagosaurus*. A new phylogeny presented here shows a close affiliation of *Patagosaurus* with *Cetiosaurus* from the Middle Jurassic of the UK. The close relationship of *Patagosaurus* with *Barapasaurus*, often found in previous phylogenies, was not recovered here. Instead, *Patagosaurus* is retrieved as more derived than most Early and Middle Jurassic sauropods, although more basal to *Mamenchisaurus*, *Omeisaurus*, turiasaurians, and neosauropods. Another sauropod taxon found together with *Patagosaurus*, *Volkheimeria*, is retrieved several nodes more basal than the former, which shows, together with evidence of several other sauropod taxa in

### RESUMEN

Los eusaurópodos no neosaurópodos del Jurásico de Gondwana son especies clave para la comprensión de la evolución del clado Sauropoda, aunque sus relaciones filogenéticas siguen sin estar bien resueltas. Sin embargo, gracias a la revisión del holotipo de uno de los taxones más importantes del Jurásico Medio temprano de la Formación Cañadón Asfalto, *Patagosaurus fariasi*, bastantes de sus hipótesis filogenéticas han de ser puestas en duda, basadas en la nueva información osteológica recogida durante la redescipción del holotipo de *Patagosaurus*. La nueva hipótesis filogenética aquí presentada muestra una relación cercana entre *Patagosaurus* y *Cetiosaurus*, del Jurásico Medio del Reino Unido. La cercanía filogenética de *Patagosaurus* con *Barapasaurus*, publicada en numerosos análisis filogenéticos, no se obtuvo en este nuevo análisis. En este caso, *Patagosaurus* aparece como un taxón más derivado que la mayoría de saurópodos del Jurásico Medio y Superior, aunque más basal que *Mamenchisaurus*, *Omeisaurus*, Turiasauria y Neosauropoda. Otro taxón que se encuentra normalmente emparentado con *Patagosaurus*,

the Cañadón Asfalto Formation, that a high evolutionary diversity existed in Southwest Gondwana in the early Middle Jurassic, a pattern which is also seen in fossil groups other than sauropods (e.g., theropods).

**Keywords:** Middle Jurassic, Gondwana, Patagonia, sauropod, phylogeny.

*Volkheimeria*, en nuestro análisis aparece varios nodos más basalmente que *Patagosaurus*. Esto muestra, junto con la presencia de otros taxones de saurópodos de la Formación de Cañadón Asfalto, que una diversidad evolutiva alta existió en el suroeste de Gondwana en el Jurásico Medio temprano, un patrón que también está presente en otros grupos fósiles (e.g., terópodos).

**Palabras clave:** Jurásico Medio, Gondwana, Patagonia, saurópodo, filogenia.

## 1. INTRODUCTION

Non-neosauropod sauropods are thought to have emerged in the Late Triassic of South Gondwana, although remains of a basal sauropod are known from possible Triassic sediments of Thailand (Buffetaut *et al.*, 2000, 2002; Racey & Goodall, 2009) and recently described ichnofossils suggest the presence of sauropods in the Late Triassic of Greenland (Lallensack *et al.*, 2017). After their initial appearance in the fossil record, sauropods achieved a worldwide distribution by the Early Jurassic (Raath, 1972; Jain *et al.*, 1975; Cooper, 1984; McPhee *et al.*, 2015, 2016), with non-neosauropod eusauropods first appearing in the fossil record in the early Middle Jurassic of Gondwana and Laurasia, with most material coming from South America (e.g., *Patagosaurus*, *Volkheimeria*) (Bonaparte, 1979, 1986a), Africa (e.g., *Spinophorosaurus*, *Lapparentosaurus*, *Bothriospondylus*) (Bonaparte, 1986b; Läng, 2008; Remes *et al.*, 2009; Mannion, 2010), and India (e.g., *Barapasaurus*) (Jain *et al.*, 1975; Bandyopadhyay *et al.*, 2010). Other forms are known from Europe (e.g. *Cetiosaurus*) and Asia (e.g. *Shunosaurus*) (Zhang, 1988) but they are found in younger sediments of late Middle Jurassic age, or even early Late Jurassic (Wang *et al.*, 2018). By the Late Jurassic boundary (~150Ma) all major clades were established (McIntosh, 1990; Upchurch *et al.*, 2004; Barrett & Upchurch, 2005; Wilson, 2005). The Gondwanan taxa are especially important for the study of sauropod evolution, as they are represented by the most complete record to date of early eusauropod body fossils. *Patagosaurus fariasi* is one of the best-preserved taxa with a plethora of referred material (Bonaparte, 1986a) found in two localities of the Cañadón Asfalto Formation near the Cerro Cóndor village in central Patagonia, Argentina. Though used in many phylogenies, it has not received much revision since it was named and first described in 1979 and 1986 by Bonaparte, and therefore its current phylogenetic position is unclear. Moreover, the strata from whence *Patagosaurus* and *Volkheimeria* were unearthed contain at least three other (as yet unnamed) sauropod taxa (Pol *et al.*, 2009; Rauhut, 2003a; Holwerda *et al.*, 2015;

Becerra *et al.*, 2017; Carballido *et al.*, 2017). This shows a higher taxic diversity than elsewhere in Gondwana or Laurasia in contemporaneous beds. Finally, the Cañadón Asfalto Formation has recently been redated and found to be much older than previously assumed; roughly ranging between Toarcian–Bajocian (Cúneo *et al.*, 2013), placing the fossils from the Cañadón Asfalto Formation right at the time of the early eusauropod diversification and radiation (Bonaparte, 1986b; Barrett & Upchurch, 2005; Cúneo *et al.*, 2013).

Traditionally, *Patagosaurus* is retrieved as a basal eusauropod, more derived than *Shunosaurus*, and more basal to *Mamenchisaurus*, *Omeisaurus*, turiasaurians and neosauropods (see, for instance, Upchurch, 1998; Wilson, 2002; Harris, 2006; Carballido *et al.*, 2011, 2012). In some phylogenetic analyses, *Patagosaurus* has come out either as sister taxon to the Indian Early–Middle Jurassic taxon *Barapasaurus* or the Middle Jurassic *Cetiosaurus* from the UK (Allain & Aquesbi, 2008; Remes *et al.*, 2009). Other phylogenies recover *Patagosaurus* as more derived than either *Barapasaurus* or *Cetiosaurus* or one or other as more/less derived. The analysis of Läng & Mahammed (2010) recovers *Patagosaurus* as more derived than *Barapasaurus*, *Cetiosaurus oxoniensis*, and *Cetiosaurus mogrebiensis*, but more basal to the Rutland *Cetiosaurus*. The differing results of several phylogenies, which incorporate more basal sauropods reflect on the paucity of information on Early and Middle Jurassic sauropods.

Bonaparte (1986a) traditionally grouped *Barapasaurus*, *Cetiosaurus* and *Patagosaurus* together as ‘cetiosaurs’ based on morphological similarities, primarily in posterior dorsal vertebrae. With new information on the osteology of *Patagosaurus*, these relationships can be revisited. *Volkheimeria*, found together with *Patagosaurus* in the Cerro Cóndor localities, Patagonia, Argentina, was thought to be closely related to the Malagasy taxon *Lapparentosaurus* by Bonaparte (1986a, 1986b), however, in some phylogenies *Volkheimeria* is retrieved as more basal than *Patagosaurus* (e.g., Pol *et al.*, 2011) and *Lapparentosaurus* has rarely been included in phylogenetic datasets, save for the analyses of Läng (2008) and Mannion

*et al.* (2013). Recoding these specimens may further elucidate the interrelationships of Gondwanan eusauro pods, which in turn will aid in sauropod evolutionary and biogeographical research.

Here, we present a new phylogenetic analysis focusing on Jurassic Gondwanan sauropods, together with an updated systematic review of all major Jurassic sauropod taxa that provide osteological information for phylogenetic analysis.

## 2. METHODS

### 2.1. Coding

Coding was done based on first-hand observations of the holotype of *Patagosaurus* (Instituto Miguel Lillo, Tucuman, Argentina), *Cetiosaurus oxoniensis* (OUMNH, Oxford, UK) and the Rutland *Cetiosaurus* (New Walk Museum and Art Gallery, Leicester, UK), *Lapparentosaurus* (MNHN, Paris, France), *Amygdalodon* (Museo de La Plata, Argentina), *Bothriospondylus* (NHM, London), *Cetiosauriscus* (NHM, London), *Tazoudasaurus* (MNHN, Paris), *Spinophorosaurus* and *Jobaria* (NMB, Naturhistorisches Museum Braunschweig, Braunschweig, Germany). All other sauropods in this matrix were coded using photographs, publications and information from previous matrices.

The matrix used is based on Carballido *et al.* (2012), to which characters were added by McPhee *et al.* (2014) as well as new characters which were added by the authors. See Supplementary Data for a list of characters and their coding.

### 2.2. Software

The data matrix was coded using Mesquite version 2.75 (Maddison & Maddison, 2010).

The resulting data matrix was analysed in TNT (Goloboff *et al.*, 2008) in TNT version 1.5 (Goloboff & Catalano, 2016).

## 3. RESULTS

### 3.1. Systematic revision of Middle Jurassic Gondwanan sauropods

An updated systematic overview of several relatively well represented Early and Middle Jurassic sauropods used in this analysis is given below.

*Patagosaurus fariasi* was found in the late 70's and early 80's, it was named in 1979 and more fully described in 1986 (Bonaparte, 1979, 1986a). Several specimens were found from two localities, Cerro Cóndor Norte (which yielded the holotype specimen) and Cerro Cóndor Sur, both in the Cañadón Asfalto Formation, west-central Chubut Province, Patagonia, Argentina. The age is probably Aalenian–Bajocian, which is significantly older than the original Callovian age given (Bonaparte, 1986a; Cúneo *et al.*, 2013). It is now believed that the material originally assigned to *Patagosaurus* includes at least one other taxon, and, possibly, two further taxa (MACN-CH 934, MACN-CH 230; Rauhut, 2003a). For this analysis, however, only the holotype PVL 4170 is coded.

*Barapasaurus tagorei* is an Indian taxon from the Early Jurassic Kota Formation, Pranhita-Godavari basin, Deccan, India (Bandyopadhyay *et al.*, 2010). It was first described in the 1970's (Jain *et al.*, 1975; Jain, 1980) and was recently redescribed (Bandyopadhyay *et al.*, 2010). Next to the basal sauropod *Kotasaurus* (Yadagiri, 2001; Kutty *et al.*, 2007), it is the only Indian Early Jurassic taxon known to date, and is therefore important for the study of Gondwanan sauropod evolution. It is known from several specimens, and includes teeth, as well as axial and appendicular material including pelvic and pectoral elements.

*Cetiosaurus oxoniensis* is historically speaking the oldest sauropod to be described, despite being deliberately omitted from the first paper naming Dinosauria, as it was thought to be a marine animal. Although not completely described until 1871 (see Owen, 1841, 1842; Phillips, 1871; Upchurch & Martin, 2003; Taylor, 2010), its first description dates from 1841 (the same year that *Cardiodon* was first described but based only on an isolated tooth (Owen, 1841; Taylor, 2010). The genus has, unfortunately, become a wastebasket for many *nomina dubia* and *nomina nuda* over the years. The type species under ICZN regulations was *Cetiosaurus medius*, which is a very incomplete series, however in 2009 the *Cetiosaurus* specimen known as the Bletchingdon specimen, from near Oxford, which is a large individual with many more skeletal elements than *C. medius*, was designated as the type species after an ICZN case was made (Taylor, 2010; Upchurch *et al.*, 2009; Upchurch & Martin, 2003). It is from the Forest Marble of Oxfordshire, UK, which is Bathonian in age ( $\pm 168$  Ma). The specimen includes a caudal series, one partial cervical, a partial dorsal, and many appendicular elements, as well as pectoral and pelvic elements.

The “Rutland *Cetiosaurus*” is a sauropod found in Rutland, Leicestershire, UK, in 1968 in a brick pit, the sediments of which are dated as upper Bajocian ( $\pm 175$  Ma). The specimen is the most complete sauropod from the UK to date, consisting of a well-preserved cervical and dorsal series, several caudals, and several (though more

fragmentary) appendicular elements. It was originally ascribed to *Cetiosaurus oxoniensis* (Upchurch & Martin, 2002), however, recently several differences have been found between the Rutland *Cetiosaurus* and *Cetiosaurus oxoniensis*, which could mean that the Rutland *Cetiosaurus* is in fact a different species from *C. oxoniensis*, which has previously been proposed (Läng, 2008).

*Volkheimeria chubutensis* is a sauropod from the locality of Cerro Cóndor Sur, Cañadón Asfalto Formation, west-central Chubut, Patagonia, Argentina. It is known from several vertebral and appendicular elements, as well as pelvic elements. It was found together with *Patagosaurus*, and described in 1979 and 1986 by Bonaparte.

*Amygdalodon patagonicus* is an Early Jurassic sauropod from Patagonia, Argentina. It was found in the Cerro Carnerero Formation at Pampa Agnia, Patagonia, Argentina, which was thought to be Bajocian, but may be as old as Pliensbachian-Toarcian (see Rauhut, 2003a; Cúneo *et al.*, 2013). It was first described in 1947 (Cabrera, 1947), redescribed in three subsequent papers (Casamiquela, 1963; Rauhut, 2003b; Carballido & Pol, 2010). The material consists of isolated teeth, several appendicular elements and some fragmentary axial elements. It has been retrieved as a sauropod basal to *Tazoudasaurus*, *Vulcanodon*, and eusauropods. The dentition, in particular the enamel wrinkling pattern, thus far has been found to be unique amongst other basal sauropods (Carballido & Pol, 2010).

*Tazoudasaurus naimi* was found in the High Atlas Mountains in Morocco, North Africa, from the Azilal/Wazzant Formation, which is thought to be Toarcian to Aalenian in age, with *Tazoudasaurus* coming most probably from the Toarcian layers (Allain *et al.*, 2004; Allain & Aquesbi, 2008). It is known from several individuals, both juveniles and adults, which sheds light on early sauropod ontogenetic variation. The material consists of dentition, cranial, axial, and appendicular material. A reconstruction of *Tazoudasaurus* has also been recently attempted (Peyer & Allain, 2010).

*Spinophorosaurus nigerensis* is a recently described basal eusauropod from the Middle Jurassic of Niger, Africa (Remes *et al.*, 2009). It is known from several specimens, most of which are still under preparation. A full osteology is currently in the making (F. Knoll, pers. comm.). The holotype consists of several axial elements, cranial elements, teeth, and several pectoral, pelvic and appendicular elements. A braincase was described in 2012, drawing attention to a combination of primitive and derived characters (Knoll *et al.*, 2012), which is not unusual for basal eusauropods. Lastly, this sauropod is peculiar for Jurassic sauropods in that it probably possessed tail spines (Remes *et al.*, 2009).

*Shunosaurus lii* was found in 1977, named in 1983 and further described in 1988 (Dong *et al.*, 1983; Zhang, 1988). It was found in the Lower Xiashaximiao Formation

near Dashanpu, Zigong, China, which was thought to be Bathonian to Oxfordian in age ( $\pm 168$ -157 Ma), however, recent redating of the depositional sediments yields a maximum age of  $159 \pm 2$  Ma, giving it an Oxfordian age (Wang *et al.*, 2018). It is the most common sauropod from the Xiashaximiao Formation. It was thought to be a euhelopodid sauropod by Upchurch (1995, 1998), however, Wilson (2002) retrieved it as a basal eusauropod. A redescription of cranial material was published more recently, which found a unique curvature in both the maxillae as well as the dentaries (Chatterjee & Zheng, 2002; Zheng, 1996). A more recent description of the postcranial material, however, has not been performed. More redescriptions of Chinese sauropods from the Middle Jurassic will give more information on the phylogenetic position of *Shunosaurus*. Currently, it is usually found at the base of the eusauropods, being more basal than *Cetiosaurus*, *Patagosaurus*, and all other sauropods, but more derived than *Vulcanodon*, *Tazoudasaurus*, *Amygdalodon*, and *Spinophorosaurus* in phylogenetic analyses. Finally, it is peculiar amongst Jurassic sauropods due to the presence of a tailclub, something found otherwise (thus far) only in *Spinophorosaurus*, *Mamenchisaurus*, and potentially *Kotasaurus* (Xing *et al.*, 2009; Ouyang & Ye, 2002; Remes *et al.*, 2009).

*Mamenchisaurus* is a generic name for many different species, the most important for this study being *Mamenchisaurus youngi* and *Mamenchisaurus hochuanensis* (Young & Zhao, 1972; Russell & Zheng, 1993; Pi *et al.*, 1996; Ouyang & Ye, 2002). The Mamenchisauridae is a group of Laurasian sauropods with extreme neck elongation, and their remains have been found in China, Thailand, and Mongolia (Suteethorn *et al.*, 2012; Xing *et al.*, 2015). The *Mamenchisaurus* fauna, unlike the *Shunosaurus-Omeisaurus* fauna, is Middle Jurassic in age (Wang *et al.*, 2018). Their interrelationships are a work of ongoing progress, as in many eusauropod phylogenies they emerge as more derived than most derived non-neosauropod eusauropods, like *Cetiosaurus* and *Patagosaurus* (e.g., Wilson, 2002; Upchurch *et al.*, 2004; Allain & Aquesbi, 2008; Remes *et al.*, 2009). This could, however, be due to only one species of *Mamenchisaurus* generally being used for sauropod phylogenies (and then it usually is retrieved as sister-taxon to *Omeisaurus*) since within a mamenchisaurid-based phylogeny they are retrieved as more basal than most non-neosauropod eusauropods (Xing *et al.*, 2015).

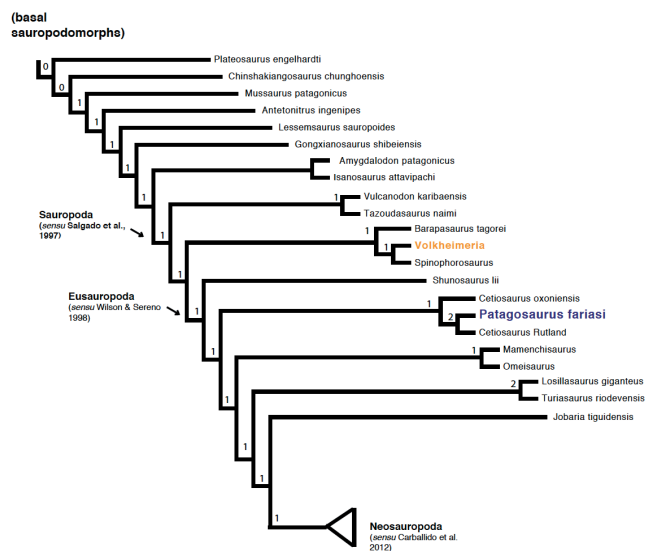
*Omeisaurus* is a generic name for species that include *Omeisaurus maioianus*, *Omeisaurus junghsiensis*, and many others. It was found in the Shaximiao Formation of Sichuan Province, China, which was dated to the Bathonian-Callovian ( $\pm 178$ -168 Ma), however, like *Shunosaurus*, it is recently found to be Oxfordian in age ( $159 \pm 2$  Ma) (Wang *et al.*, 2018). It was first described in 1939, and more specimens were added to the genus in the 1970's and 1980's, several of them supposedly representing

different species. The most recent descriptions are from the early 2000's, however (Young, 1939; Dong *et al.*, 1983; He *et al.*, 1984, 1988; Tang *et al.*, 2001; Wings *et al.*, 2011).

### 3.2 Phylogeny

The matrix used consists of 350 characters and 75 taxa. Pruning was done for unstable taxa after the tree searches by using IterPCR (Pol & Escapa, 2009; Goloboff & Szumik, 2015). Taxa to be pruned a-posteriori were *Cetiosauriscus stewarti* and *Klamelisaurus gobiensis*. Both sauropod taxa are either in need of revision or are currently under revision (see Heathcote & Upchurch, 2003; Moore *et al.*, 2017). The resulting consensus tree with Bremer support is shown in Figure 1.

*Patagosaurus* is retrieved as sister taxon to the Rutland *Cetiosaurus*, and nested within *Cetiosaurus*, (see Table 1 for a list of synapomorphies). Furthermore, *Barapasaurus*, the other 'cetiosaur', is retrieved as less derived, being sister-taxon to the node of *Spinophorosaurus*+*Volkheimeria*, which all together are more basal to *Shunosaurus* and *Patagosaurus*+*Cetiosaurus*. Moreover, it takes 14 steps to force *Barapasaurus* to nest within *Cetiosaurus oxoniensis* and it takes 15 extra steps for it to go into a sister-group with *Patagosaurus* and the Rutland *Cetiosaurus* (Table 2). In a previous analysis by Remes *et al.* (2009), *Patagosaurus*+*Barapasaurus* were only one step away from the shortest trees. The main characters that differ between *Patagosaurus* and *Barapasaurus* are the ventral surface of the dorsal centra (ch.153) and the projection of the neural spine of anterior caudal vertebrae (ch.221). *Spinophorosaurus*, on the other hand, needs only two steps to be nested with *Cetiosaurus*, and 3 steps to be sister taxon to *Patagosaurus*. Other than this, the tree does not change much from previous analyses, in that *Tazoudasaurus* and *Vulcanodon* come out as sister-taxa, and more basal to *Barapasaurus*, as was previously also found (Allain & Aquesbi, 2008; Läng, 2008). *Patagosaurus* is also still found to be more basal to mamenchisaur, turiasaurians, and neosauropods, which was also found in previous analyses (e.g., Wilson, 2002; Harris, 2006; Carballido *et al.*, 2012, 2015; Carballido & Sander, 2014) Neosauropoda. However, the re-coding of *Volkheimeria* retrieves this taxon as more basal than *Patagosaurus*, forming a sister-group with the North African Middle Jurassic taxon *Spinophorosaurus*. In the current analysis, only takes one additional step to undo this grouping, however, it takes eleven steps to force *Volkheimeria* as sister taxon to *Patagosaurus*. *Volkheimeria* was recovered as a basal sauropod in a previous analysis (Pol *et al.*, 2011) however, in the 2011 analysis it was recovered as more derived than *Shunosaurus*, and more basal than *Lapparentosaurus*, *Barapasaurus*, *Omeisaurus*, and *Patagosaurus*.



**Figure 1.** Consensus tree with Bremer support, *Patagosaurus* highlighted in blue and *Volkheimeria* highlighted in yellow.

**Table 1.** List of synapomorphies for *Patagosaurus* and other nodes.

Node	Synapomorphies
<i>Spinophorosaurus</i> + <i>Volkheimeria</i>	155: weakly developed hyposphene-hypanthrum complex on posterior dorsals
<i>Barapasaurus</i> + <i>eusauropods</i>	108: presence of longitudinal grooves on teeth 175: height of pedicels of middle and posterior dorsal postzygapophyses subequal or higher than centrum
<i>Patagosaurus</i> + <i>Rutland Cetiosaurus</i>	123: Complex pleurocoel on cervical centra 134: laterally expanded neural spine on posterior cervicals 157: single tpol supporting hyposphene from below 179: medial spol on posterior dorsals
<i>Cetiosaurus</i> + <i>Patagosaurus</i> + <i>Rutland Cetiosaurus</i>	164: pcpl absent on middle and posterior dorsals 165: slightly dorsoventrally compressed dorsal centrum 175: height of pedicels of middle and posterior dorsal postzygapophyses subequal or higher than centrum 217: presence of ventral longitudinal hollow on anterior and middle caudals
<i>Mamenchisaurus</i> + <i>eusauropods</i>	115: presence of pleurocoels within cervical centra 137: 12 or more dorsal vertebrae 138: pleurocoels in dorsal centra 148: single neural spines on dorsal vertebrae 174: dorsal contact of spdl + lspol 192: dorsoventral length sacral ribs 238: size scapular acromion process

**Table 2.** number of steps required to move key taxa to other nodes or positions.

Taxon	Moved to position/node	n.o. extra steps required
<i>Barapasaurus</i>	<i>Cetiosaurus oxoniensis</i>	12
<i>Barapasaurus</i>	<i>Patagosaurus</i> + Rutland <i>Cetiosaurus</i>	15
<i>Barapasaurus</i>	Sister taxon to <i>Patagosaurus</i>	14
<i>Barapasaurus</i>	<i>Spinophorosaurus</i> + <i>Volkheimeria</i>	8
<i>Patagosaurus</i>	Sister taxon to <i>Cetiosaurus oxoniensis</i>	5
<i>Spinophorosaurus</i>	<i>Cetiosaurus oxoniensis</i>	2
<i>Spinophorosaurus</i>	Sister taxon to <i>Patagosaurus</i>	3
<i>Spinophorosaurus</i>	Sister taxon to Rutland <i>Cetiosaurus</i>	5
<i>Volkheimeria</i>	<i>Patagosaurus</i> + Rutland <i>Cetiosaurus</i>	11
<i>Volkheimeria</i>	Sister taxon to <i>Patagosaurus</i>	14

#### 4. DISCUSSION

Even though the phylogenetic position of *Patagosaurus* with respect to most non-neosauropod sauropods does not differ much in this analysis from previous analyses, the nesting of *Patagosaurus* within *Cetiosaurus* is an interesting new outcome of this phylogeny. This position does confirm the original assessment of Bonaparte (1986a), in that *Patagosaurus* and *Cetiosaurus* share a close phylogenetic affinity. Both are from roughly the same age; *Patagosaurus* from the early Middle Jurassic (likely Aalenian–Bajocian), *Cetiosaurus oxoniensis* from the Bathonian, and the Rutland *Cetiosaurus* being Bajocian in age (Cox *et al.*, 1992; Upchurch & Martin, 2002, 2003; Liston, 2004a, 2004b; Barrett, 2006; Noè, *et al.*, 2010; Cúneo *et al.*, 2013; Hauser *et al.*, 2017). Further research, especially on the Rutland *Cetiosaurus*, might give more information on the precise relationships between these taxa and whether or not the ‘cetiosaurs’ as a group are in need of revision.

The separation of *Patagosaurus* and *Barapasaurus* by several steps is another new outcome of this analysis. The break-up of the *Barapasaurus*+*Patagosaurus* grouping has interesting biogeographical implications. Remes *et al.* (2009) suggested the Central Gondwanan Desert may be a biogeographical barrier that isolated southern Gondwana and cited the sister-group relationship of *Barapasaurus*+*Patagosaurus* as lending support to this hypothesis. The new phylogenetic results do not support such a scenario and, furthermore, it also shows few extra steps are necessary to group *Patagosaurus* with the North

African taxon *Spinophorosaurus*. More osteological information on *Spinophorosaurus* may resolve this in the future.

The high diversity of sauropods in the Cañadón Asfalto Formation, shown here by *Patagosaurus* as a derived non-neosauropod eusauropod and *Volkheimeria* as a more basal sauropod, whilst both originating from the same bonebed, is compatible with a rapid regional diversification in the early Middle Jurassic, a pattern also noted for Jurassic theropods from Patagonia (Pol & Rauhut, 2012). Finally, the presence of a derived eusauropod in the Aalenian–Bajocian suggests an earlier sauropod diversification, which might be pushed back into the Early Jurassic or even to the Late Triassic. However, in order to investigate whether the early Middle Jurassic strata of Patagonia were a sauropod biodiversity ‘hotspot’, other sauropods from Gondwana require revision, such as *Barapasaurus*, *Lapparentosaurus*, *Bothriospondylus* and even *Volkheimeria*.

#### 5. CONCLUSIONS

With this new analysis, *Patagosaurus fariasi* is retrieved as a derived non-neosauropodan eusauropod, more derived than most non-neosauropodan sauropods, and basal to (*Mamenchisaurus*+*Omeisaurus*, turiasaurians). It is retrieved as sister taxon to the Rutland *Cetiosaurus*, and as nested within *Cetiosaurus*. The analysis shows a high sauropod taxonomic and evolutionary diversity, which in turn points to a rapid regional diversification in the early Middle Jurassic of Patagonia, making South Gondwana an important site for sauropod evolution and radiation.

#### ACKNOWLEDGEMENTS

The authors would like to thank Jaime Powell (Instituto Lillo, Tucuman), Hillary Ketchum (OUMNH, Oxford), Mark Evans (New Walk Museum, Leicester), Sandra Chapman (NHM, London), Ronan Allain (MNHN, Paris), Ulrich Joger & Ralf Kosma (SNHM, Braunschweig) for kind admission to the collections their museums. The authors are further indebted to José Luis Carballido, Emmanuel Tschopp and Phil Mannion for sharing collection images. Verónica Díez Díaz is thanked for her kind suggestions, comments and translations, as well as José Canudo, both of whose comments improved this paper. Finally, the authors acknowledge the Willi Hennig Society. FH was funded by the SEP AJISEP-2016 (SEPAI-2016-07313) grant.

## REFERENCES

- Allain, R. & Aquesbi, N. 2008. Anatomy and phylogenetic relationships of *Tazoudasaurus naimi* (Dinosauria, Sauropoda) from the late Early Jurassic of Morocco. *Geodiversitas*, 30, 345–424.
- Allain, R., Aquesbi, N., Dejax, J., Meyer, C., Monbaron, M., Montenat, C. & Taquet, P. 2004. A basal sauropod dinosaur from the Early Jurassic of Morocco. *Comptes Rendus Palevol*, 3, 199–208; doi: 10.1016/j.crpv.2004.03.001.
- Bandyopadhyay, S., Gillette, D.D., Ray, S. & Sengupta, D.P. 2010. Osteology of *Barapasaurus tagorei* (Dinosauria: Sauropoda) from the Early Jurassic of India. *Palaeontology*, 53, 533–569; doi: 10.1111/j.1475-4983.2010.00933.x.
- Barrett, P.M. 2006. A sauropod dinosaur tooth from the Middle Jurassic of Skye, Scotland. *Earth and Environmental Science Transactions of the Royal Society of Edinburgh*, 97, 25–29; doi: 10.1017/S0263593300001383.
- Barrett, P.M. & Upchurch, P. 2005. Sauropodomorph diversity through time. In: *The Sauropods: Evolution and Paleobiology* (eds. Curry, R.K. & Wilson, J.). Berkeley, CA, Univ. of California Press, 125–156.
- Becerra, M.G., Gomez, K.L. & Pol, D. 2017. A sauropodomorph tooth increases the diversity of dental morphotypes in the Cañadón Asfalto Formation (Early–Middle Jurassic) of Patagonia. *Comptes Rendus Palevol*, 16, 832–840; doi: 10.1016/j.crpv.2017.08.005.
- Bonaparte, J.F. 1979. Dinosaurs: a Jurassic assemblage from Patagonia. *Science*, 205, 1377–1379; doi: 10.1126/science.205.4413.1377.
- Bonaparte, J.F. 1986a. Les dinosaures (Carnosaures, Allosauridés, Sauropodes, Cétosauridés) du Jurassique Moyen de Cerro Cóndor (Chubut, Argentina). *Annales de Paléontologie (Vert.-Invert.)*, 72, 247–289.
- Bonaparte, J.F. 1986b. The early radiation and phylogenetic relationships of the Jurassic sauropod dinosaurs, based on vertebral anatomy. In: *The Beginning of the Age of Dinosaurs* (ed. Padian, K.). Cambridge University Press, Cambridge, 247–258.
- Buffetaut, E., Suteethorn, V., Cuny, G., & Tong, H. 2000. The earliest known sauropod dinosaur. *Nature*, 407, 72.
- Buffetaut, E., Suteethorn, V., Le Loeuff, J., Cuny, G., Tong, H. & Khansubha, S. 2002. The first giant dinosaurs: a large sauropod from the Late Triassic of Thailand. *Comptes Rendus Palevol*, 1, 103–109; doi: 10.1016/S1631-0683(02)00019-2.
- Cabrera, A. 1947. Un saurópodo nuevo del Jurásico de Patagonia. *Notas Museo de La Plata Paleontología*, 95, 1–17.
- Carballido, J.L. & Pol, D. 2010. The dentition of *Amygdalodon patagonicus* (Dinosauria: Sauropoda) and the dental evolution in basal sauropods. *Comptes Rendus Palevol*, 9, 83–93; doi: 10.1016/j.crpv.2010.01.003.
- Carballido, J.L. & Sander, P.M. 2014. Postcranial axial skeleton of *Europasaurus holgeri* (Dinosauria, Sauropoda) from the Upper Jurassic of Germany: implications for sauropod ontogeny and phylogenetic relationships of basal Macronaria. *Journal of Systematic Palaeontology*, 12, 335–387; doi: 10.1080/14772019.2013.764935.
- Carballido, J.L., Rauhut, O.W.M., Pol, D. & Salgado, L. 2011. Osteology and phylogenetic relationships of *Tehuelchesaurus benitezii* (Dinosauria, Sauropoda) from the Upper Jurassic of Patagonia. *Zoological Journal of the Linnean Society*, 163, 605–662; doi: 10.1111/j.1096-3642.2011.00723.x.
- Carballido, J.L., Salgado, L., Pol, D., Canudo, J.I. & Garrido, A. 2012. A new basal rebbachisaurid (Sauropoda, Diplodocoidea) from the Early Cretaceous of the Neuquén Basin; evolution and biogeography of the group. *Historical Biology*, 24, 631–654; doi: 10.1080/08912963.2012.672416.
- Carballido, J.L., Pol, D., Ruge, M.L.P., Bernal, S.P., Páramo-Fonseca, M.E. & Etayo-Serna, F. 2015. A new Early Cretaceous brachiosaurid (Dinosauria, Neosauropoda) from northwestern Gondwana (Villa de Leiva, Colombia). *Journal of Vertebrate Paleontology*, 35, e980505; doi: 10.1080/02724634.2015.980505.
- Carballido, J.L., Holwerda, F.M., Pol, D. & Rauhut, O.W. 2017. An Early Jurassic sauropod tooth from Patagonia (Cañadón Asfalto Formation): Implications for sauropod diversity. *Publicación Electrónica de La Asociación Paleontológica Argentina*, 17, 50–57.
- Casamiquela, R.M. 1963. Consideraciones acerca de *Amygdalodon* Cabrera (Sauropoda, Cetiosauridae) del Jurásico Medio de La Patagonia. *Ameghiniana*, 3, 79–95.
- Chatterjee, S. & Zheng, Z. 2002. Cranial anatomy of *Shunosaurus*, a basal sauropod dinosaur from the Middle Jurassic of China. *Zoological Journal of the Linnean Society*, 136, 145–169.
- Cooper, M.R. 1984. A reassessment of *Vulcanodon karibaensis* Raath (Dinosauria: Saurischia) and the origin of the Sauropoda. *Palaeontologia Africana*, 25, 203–231.
- Cox, B.M., Hudson, J.D. & Martill, D.M. 1992. Lithostratigraphic nomenclature of the Oxford Clay (Jurassic). *Proceedings of the Geologists' Association*, 103, 343–345.
- Cúneo, R., Ramezani, J., Scasso, R., Pol, D., Escapa, I., Zavattieri, A.M. & Bowering, S.A. 2013. High-precision U–Pb geochronology and a new chronostratigraphy for the Cañadón Asfalto Basin, Chubut, central Patagonia: Implications for terrestrial faunal and floral evolution in Jurassic. *Gondwana Research*, 24, 1267–1275; doi: 10.1016/j.gr.2013.01.010.
- Dong, Z., Zhou, S.W. & Zhang, Y. 1983. Dinosaurs from the Jurassic of Sichuan. *Palaeontologica Sinica, New Series C*, 162, 1–136.
- Goloboff, P.A. & Catalano, S.A. 2016. TNT version 1.5, including a full implementation of phylogenetic morphometrics. *Cladistics*, 32, 221–238; doi: 10.1111/cla.12160.
- Goloboff, P.A. & Szumik, C. A. 2015. Identifying unstable taxa: Efficient implementation of triplet-based measures of stability, and comparison with Phyutility and RogueNaRok. *Molecular Phylogenetics and Evolution*, 88, 93–104; doi: 10.1016/j.ympev.2015.04.003.
- Goloboff, P.A., Farris, J.S. & Nixon, K.C. 2008. TNT, a free program for phylogenetic analysis. *Cladistics*, 24, 774–786; doi: 10.1111/j.1096-0031.2008.00217.x.

- Harris, J.D. 2006. The significance of *Suuwassea emiliae* (Dinosauria: Sauropoda) for flagellicaudatan intrarelationships and evolution. *Journal of Systematic Palaeontology*, 4, 185–198; doi: 10.1017/S1477201906001805.
- Hauser, N., Cabaleri, N.G., Gallego, O.F., Monferran, M.D., Nieto, D.S. & Armella, C. 2017. U-Pb and Lu-Hf zircon geochronology of the Cañadón Asfalto Basin, Chubut, Argentina: Implications for the magmatic evolution in central Patagonia. *Journal of South American Earth Sciences*, 78, 190–212; doi: 10.1016/j.jsames.2017.05.001.
- He, X., Li, K., Cai, K. & Gao, Y. 1984. *Omeisaurus tianfuensis*—a new species of *Omeisaurus* from Dashanpu, Zigong, Sichuan. *Journal of Chengdu College Geology, Supplement*, 2, 13–32.
- He, X., Li, K. & Cai, K. 1988. *The Middle Jurassic Dinosaur Fauna from Dashanpu, Zigong, Sichuan. Vol. IV. Sauropod Dinosaurs (2) Omeisaurus tianfuensis*. Sichuan Publishing House of Science and Technology, Chengdu, China.
- Heathcote, J. & Upchurch, P. 2003. The relationships of *Cetiosauriscus stewarti* (Dinosauria; Sauropoda): implications for sauropod phylogeny. *Journal of Vertebrate Paleontology*, 23 (Supplement 3), 60A.
- Holwerda, F.M., Pol, D. & Rauhut, O.W.M. 2015. Using dental enamel wrinkling to define sauropod tooth morphotypes from the Cañadón Asfalto Formation, Patagonia, Argentina. *PLoS ONE*, 10, e0118100; doi: 10.1371/journal.pone.0118100.
- Jain, S.L. 1980. The continental lower Jurassic fauna from the Kota formation, India. *Aspects of Vertebrate History: Museum of Northern Arizona Press, Flagstaff*, 99–123.
- Jain, S.L., Kuttly, T.S., Roy-Chowdhury, T. & Chatterjee, S. 1975. The sauropod dinosaur from the Lower Jurassic Kota formation of India. *Proceedings of the Royal Society of London B: Biological Sciences*, 188, 221–228; doi: 10.1098/rspb.1975.0014.
- Knoll, F., Witmer, L.M., Ortega, F., Ridgely, R.C. & Schwarz-Wings, D. 2012. The braincase of the basal sauropod dinosaur *Spinophorosaurus* and 3D reconstructions of the cranial endocast and inner ear. *PLoS ONE*, 7, e30060; doi: 10.1371/journal.pone.0030060.
- Kuttly, T.S., Chatterjee, S., Galton, P.M. & Upchurch, P. 2007. Basal sauropodomorphs (Dinosauria: Saurischia) from the Lower Jurassic of India: their anatomy and relationships. *Journal of Palaeontology*, 81, 1218–1240; doi: 10.1666/04-074.1.
- Lallensack, J.N., Klein, H., Milàn, J., Wings, O., Mateus, O. & Clemmensen, L.B. 2017. Sauropodomorph dinosaur trackways from the Fleming Fjord Formation of East Greenland: Evidence for Late Triassic sauropods. *Acta Palaeontologica Polonica*, 62, 833–843; doi: 10.4202/app.00374.2017.
- Läng, É. 2008. *Les cétiosaures (Dinosauria, Sauropoda) et les sauropodes du Jurassique moyen: révision systématique, nouvelles découvertes et implications phylogénétiques*. Ph.D. Thesis. Centre de recherche sur la paléobiodiversité et les paléoenvironnements, Paris, France.
- Läng, E. & Mahammed, F. 2010. New anatomical data and phylogenetic relationships of *Chebsaurus algeriensis* (Dinosauria, Sauropoda) from the Middle Jurassic of Algeria. *Historical Biology*, 22, 142–164; doi: 10.1080/08912960903515570.
- Liston, J.J. 2004a. A re-examination of a Middle Jurassic sauropod limb bone from the Bathonian of the Isle of Skye. *Scottish Journal of Geology*, 40, 119–122; doi: 10.1144/sjg40020119.
- Liston, J.J. 2004b. “Clear as the difference between an arm and a leg?” A reexamination of the Skye sauropod discoveries. *Quarterly Journal of the Dinosaur Society*, 4, 18–21.
- Maddison, W.P. & Maddison, D.R. 2010. Mesquite: a modular system for evolutionary analysis. 2011; Version 2.75. <https://www.cs.mcgill.ca/~birch/doc/mesquite/doc/MesquiteManual.pdf>.
- Mannion, P.D. 2010. A revision of the sauropod dinosaur genus ‘*Bothriospondylus*’ with a redescription of the type material of the Middle Jurassic form ‘*B. madagascariensis*’. *Palaeontology*, 53, 277–296; doi: 10.1111/j.1475-4983.2009.00919.x.
- Mannion, P.D., Upchurch, P., Barnes, R.N. & Mateus, O. 2013. Osteology of the Late Jurassic Portuguese sauropod dinosaur *Lusotitan atalaiensis* (Macronaria) and the evolutionary history of basal titanosauriforms. *Zoological Journal of the Linnean Society*, 168, 98–206; doi: 10.1111/zoj.12029.
- McIntosh, J.S. 1990. Sauropoda. In: *The Dinosauria* (Weishampel, D.B., Dodson, P. & Osmólska, H., eds). University of California Press, Berkeley, CA. 345–401.
- McPhee, B.W., Yates, A.M., Choiniere, J.N. & Abdala, F. 2014. The complete anatomy and phylogenetic relationships of *Antetonitrus ingenipes* (Sauropodiformes, Dinosauria): implications for the origins of Sauropoda. *Zoological Journal of the Linnean Society*, 171, 151–205; doi: 10.1111/zoj.12127.
- McPhee, B.W., Bonnan, M.F., Yates, A.M., Neveling, J. & Choiniere, J.N. 2015. A new basal sauropod from the pre-Toarcian Jurassic of South Africa: evidence of niche-partitioning at the sauropodomorph–sauropod boundary? *Scientific Reports*, 5, 13224; doi: 10.1038/srep13224.
- McPhee, B.W., Upchurch, P., Mannion, P.D., Sullivan, C., Butler, R.J. & Barrett, P.M. 2016. A revision of *Sanpasaurus yaoui* Young, 1944 from the Early Jurassic of China, and its relevance to the early evolution of Sauropoda (Dinosauria). *PeerJ*, 4, e2578; doi: 10.7717/peerj.2578.
- Moore, A., Xu, X. & Clark, J. 2017. Anatomy and systematics of *Klamelisaurus gobiensis*, a mamenchisaurid sauropod from the Middle-Late Jurassic Shishugou Formation of China. *Journal of Vertebrate Paleontology, Program and Abstracts*, 37 (Supplement 2), 165A.
- Noè, L.F., Liston, J.J. & Chapman, S.D. 2010. ‘Old bones, dry subject’: the dinosaurs and pterosaur collected by Alfred Nicholson Leeds of Peterborough, England. *Geological Society, London, Special Publications*, 343, 49–77; doi: 10.1144/SP343.4.



- Ouyang, H. & Ye, Y. 2002. *The First Mamenchisaurian Skeleton with Complete Skull*, Mamenchisaurus youngi. Sichuan Publishing House of Science and Technology. Chengdu, China.
- Owen, R. 1841. *Report on British Fossil Reptiles*. R. and J.E. Taylor.
- Owen, R. 1842. A description of a portion of the skeleton of *Cetiosaurus*, a gigantic extinct saurian occurring in the Oolitic Formation of different parts of England. *Proceedings of the Geological Society of London*, 3, 457–462; <http://ci.nii.ac.jp/naid/10029480295/>.
- Peyer, K. & Allain, R. 2010. A reconstruction of *Tazoudasaurus naimi* (Dinosauria, Sauropoda) from the late Early Jurassic of Morocco. *Historical Biology*, 22, 134–141; doi: 10.1080/08912960903562317.
- Phillips, J. 1871. *Geology of Oxford and the Valley of the Thames*. Clarendon Press.
- Pi, L., Ou, Y. & Ye, Y. 1996. A new species of sauropod from Zigong, Sichuan, *Mamenchisaurus youngi*. *Papers on Geosciences Contributed to the 30th International Geological Congress*. 87–91.
- Pol, D. & Escapa, I.H. 2009. Unstable taxa in cladistic analysis: identification and the assessment of relevant characters. *Cladistics*, 25, 515–527; doi: 10.1111/j.1096-0031.2009.00258.x.
- Pol, D. & Rauhut, O.W.M. 2012. A Middle Jurassic abelisaurid from Patagonia and the early diversification of theropod dinosaurs. *Proceedings of the Royal Society B: Biological Sciences*, 279, 3170–3175; doi: 10.1098/rspb.2012.0660.
- Pol, D., Rauhut, O.W.M. & Carballido, J.L., 2009. Skull anatomy of a new basal eusauropod from the Cañadon Asfalto Formation (Middle Jurassic) of Central Patagonia. *Journal of Vertebrate Paleontology, Program and Abstracts 29 (Supplement 3)*, 100A.
- Pol, D., Garrido, A. & Cerda, I.A. 2011. A new sauropodomorph dinosaur from the Early Jurassic of Patagonia and the origin and evolution of the sauropod-type sacrum. *PloS One*, 6:e14572; doi: 10.1371/journal.pone.0014572.
- Raath, M.A. 1972. Fossil vertebrate studies in Rhodesia: a new dinosaur (Reptilia: Saurischia) from near the Trias-Jurassic boundary. *Arnoldia (Rhodesia)*, 7, 1–7.
- Racey, A. & Goodall, J.G. 2009. Palynology and stratigraphy of the Mesozoic Khorat Group red bed sequences from Thailand. *Geological Society, London, Special Publications*, 315, 69–83; doi: 10.1144/SP315.6.
- Rauhut, O.W.M. 2003a. A dentary of *Patagosaurus* (Sauropoda) from the Middle Jurassic of Patagonia. *Ameghiniana*, 40, 425–432.
- Rauhut, O.W.M. 2003b. Revision of *Amygdalodon patagonicus* Cabrera, 1947 (Dinosauria, Sauropoda). *Mitt. Museum Nat. kd. Berl., Geowiss. Reihe*, 6, 173–181.
- Remes, K., Ortega, F., Fierro, I., Joger, U., Kosma, R., Ferrer, J.M. & Maga, A. 2009. A new basal sauropod dinosaur from the Middle Jurassic of Niger and the early evolution of Sauropoda. *PLoS One*, 4, e6924; doi: 10.1371/journal.pone.0006924.
- Russell, D.A. & Zheng, Z. 1993. A large mamenchisaurid from the Junggar Basin, Xinjiang, People's Republic of China. *Canadian Journal of Earth Sciences*, 30, 2082–2095; doi: 10.1139/e93-180.
- Suteethorn, S., Loeuff, J.L., Buffetaut, E., Suteethorn, V. & Wongko, K. 2012. First evidence of a mamenchisaurid dinosaur from the Upper Jurassic–Lower Cretaceous Phu Kradung Formation of Thailand. *Acta Palaeontologica Polonica*, 58, 459–469; doi: 10.4202/app.2009.0155.
- Tang, F., Jing, X., Kang, X. & Zhang, G. 2001. *Omeisaurus maoianus: a Complete Sauropod from Jingyuan, Sichuan*. China Ocean Press, Beijing, China.
- Taylor, M.P. 2010. Sauropod dinosaur research: a historical review. *Geological Society, London, Special Publications*, 343, 361–386; doi: 10.1144/SP343.22.
- Upchurch, P. 1995. The evolutionary history of sauropod dinosaurs. *Philosophical Transactions of the Royal Society of London. Series B: Biological Sciences*, 349, 365–390; doi: 10.1098/rstb.1995.0125.
- Upchurch, P. 1998. The phylogenetic relationships of sauropod dinosaurs. *Zoological Journal of the Linnean Society*, 124, 43–103; doi: 10.1006/zjls.1997.0138.
- Upchurch, P. & Martin, J. 2002. The Rutland *Cetiosaurus*: the anatomy and relationships of a Middle Jurassic British sauropod dinosaur. *Palaeontology*, 45, 1049–1074; doi: 10.1111/1475-4983.00275.
- Upchurch, P. & Martin, J. 2003. The anatomy and taxonomy of *Cetiosaurus* (Saurischia, Sauropoda) from the Middle Jurassic of England. *Journal of Vertebrate Paleontology*, 23, 208–231; doi: 10.1671/0272-4634(2003)23[208:TAATOC]2.0.CO;2.
- Upchurch, P., Barrett, P.M. & Dodson, P. 2004. Sauropoda. In: *The Dinosauria* (Weishampel, D.B., Dodson, P. & Osmólska, H., eds.). Second Edition. University of California Press, Berkeley, CA. 259–322.
- Upchurch, P., Martin, J. & Taylor, M.P. 2009. Case 3472: *Cetiosaurus* Owen, 1841 (Dinosauria, Sauropoda): proposed conservation of usage by designation of *Cetiosaurus oxoniensis* Phillips, 1871 as the type species. *Bulletin of Zoological Nomenclature*, 66, 51–55; doi: 10.21805/bzn.v66i1.a6.
- Wang, J., Ye, Y., Pei, R., Tian, Y., Feng, C., Zheng, D. & Chang, S.-C. 2018. Age of Jurassic basal sauropods in Sichuan, China: A reappraisal of basal sauropod evolution. *Geological Society of America Bulletin*, 130, 1493–1500; doi: 10.1130/B31910.1.
- Wilson, J.A. 2002. Sauropod dinosaur phylogeny: critique and cladistic analysis. *Zoological Journal of the Linnean Society*, 136, 215–275; doi: 10.1046/j.1096-3642.2002.00029.x.
- Wilson, J.A. 2005. Overview of sauropod phylogeny and evolution. *The Sauropods: Evolution and Paleobiology*, 15–49.
- Wings, O., Schwarz-Wings, D. & Fowler, D.W. 2011. New sauropod material from the Late Jurassic part of the Shishugou Formation (Junggar Basin, Xinjiang, NW China). *Neues Jahrbuch Für Geologie Und Paläontologie-Abhandlungen*, 262, 129–150; doi: 10.1127/0077-7749/2011/0183.
- Xing, L., Yong, Y.E., Chunkang, S.H.U., Guangzhao, P. & Hailu, Y.O.U. 2009. Structure, orientation and finite

- element analysis of the tail club of *Mamenchisaurus hochuanensis*. *Acta Geologica Sinica (English Edition)*, 83, 1031–1040; doi: 10.1111/j.1755-6724.2009.00134.x.
- Xing, L., Miyashita, T., Zhang, J., Li, D., Ye, Y., Sekiya, T. & Currie, P.J. 2015. A new sauropod dinosaur from the Late Jurassic of China and the diversity, distribution, and relationships of mamenchisaurids. *Journal of Vertebrate Paleontology*, 35, e889701; doi: 10.1080/02724634.2014.889701.
- Yadagiri, P. 2001. The osteology of *Kotasaurus yamanpalliensis*, a sauropod dinosaur from the Early Jurassic Kota Formation of India. *Journal of Vertebrate Paleontology*, 21, 242–252; doi: 10.1671/0272-4634(2001)021[0242:TO OKYA]2.0.CO;2.
- Young, C.-C. 1939. On a new sauropoda, with notes on other fragmentary reptiles from Szechuan. *Bulletin of the Geological Society of China*, 19, 279–315; doi: 10.1111/j.1755-6724.1939.mp19003005.x.
- Young, C.-C. & Zhao, X. 1972. Description of the type material of *Mamenchisaurus hochuanensis*. *Institute of Vertebrate Paleontology and Paleoanthropology Monograph Series I*, 8, 1–30.
- Zhang, Y. 1988. *The Middle Jurassic Dinosaur Fauna from Dashanpu, Zigong, Sichuan, Volume 1: Sauropod Dinosaur (I)*. Sichuan Publishing House of Science and Technology, Shunosaurus. Chengdu, China.
- Zheng, Z. 1996. *Cranial anatomy of Shunosaurus and Camarasaurus (Dinosauria: Sauropoda) and the phylogeny of the Sauropoda*. Ph.D. Thesis. Texas Tech University, Lubbock, TX, USA.

# Phylogenetic analysis of Gondwanan basal eusauropods from the Early–Middle Jurassic of Patagonia, Argentina

Femke M. HOLWERDA & Diego POL

[SJP, 33(2), 289-298]

## Supplementary information: character matrix and unabridged consensus tree

xread

350 75

'Plateosaurus\_engelhardti'

000000000000000000000000000000100000000010000?00000?0000??00000000000000??00000?0000?  
??0000000000000?0?00?0?000000?00?1010??00?000?000000?000000000?1?0?0000000000000000??0?0?0?  
??000000??0?000?0??000??0?000??0?0000002?010000??0?0??0000000?000000?0?0??00000000000  
0?000000001000000000000?0000000?0000000000000?00

'Chinshakiangosaurus\_chunghoensis'

??0?0??00?0???  
0?1?10??0101?010??0?0??0?0??0??0?0?0??0??0??0???  
??  
????????????0?0??

'Mussaurus\_patagonicus'

000000000000000000000000100?00?010?0000000?00????000?0?0?0??0??0??0??0??0??0??0??0??0??0??1?1??00  
000??0?0??010?0[0 1][0 1]?[0  
1]0??00??0?1010??0000000??0?0??00000000?1?0?000?000000000000??0?0?0??000000??0?0?000?0??0?  
000??0?0?0??0?00?0002?01000??0?0??00000000?000000?0????000000000000?0?000??000000?0[0  
1]0000000?00?000??00000?0000000?0?0??00?000?000?0000000??00?0

'Antetonitrus\_ingenipes'

??  
????????????????????0?0?0?10?0??0??0?0??0?0000001121?0?0000000000000000??0?1?0?0??00000?0???

?0???0???000?0?0?0???0?000002?0?000???0?0???0?1010?0000?000000?0000?0?0110?000?000?00?0  
????????????????????00100000010001?01?????001?1?000????????

'Lessemsaurus\_sauropoides'

??  
?????????0?????????0010???10?00000?0??000?00000010?1?0?000000000?000000?1?1?0??00000?0??  
??????0???0010100?000000?0?????110010[0  
1]001110000?000?00?0?00000?00?????0000000000001000????0?0000?00?1?000?00????

'Gongxianosaurus\_shibeiensis'

????????????????1??  
?????????1101?2??0?0?0?10?????????0??????0?0??????0?0?0????????????????????????????????  
0?0??000?0????????????????00?0?01000?0??0?0?001000?000?00?0?0?????1000?0?00?01?00000?0????????  
?????????????????111??0?0??01??0?????0000?1?000000100000

'Amygdalodon\_patagonicus'

??1??1????????????????  
??????1101112?21??1????1?????????00?0?????0?0?0?0??1????1????0?????0????????????00?0?0????  
??0?????00????????????0000?0?0?0?0??  
??

'Isanosaurus\_attavipachi'

??  
?????????????????????1?0?10?0?????????0??????0?0?????0?1??0?0??????0?0??1?1?0?0?0?0????????  
??000000?0000?0000????????????????????  
?????????????1110010001????????????????????????????????????

'Vulcanodon\_karibaensis'

????????????????????????????????0??  
??1????0?  
0?0??00??0?100????01?????????????00?10????0?????????????1101?0??1110100?00?0??0?1???  
?000000?010?101?????1000?0000?1000010?100100100?011001

'Tazoudasaurus\_naimi'

????????????????????????????0?10????????01????0?????????????????????????????100?00011??  
?0?00?00101112?000??1000?0010?0000010000?000?00000110?000?0000001100011?0010011110001?00010

??00??????0?00?00000001001?0?00000020020000??1100??1000000??????0?00??1101101101?10100?1  
00?001?0101?????00000000?10?0101010000?000?0?00010100?00?011?0?0001010?1

'Shunosaurus\_lii'

0100100000110110000010000000?000001001??0000001101100000100011000000000?000001100?  
0000?101?110?01101112?20120100100010?0000010000100?101000110?1?1?000000000011101[0

1]??1?1[0

1]?0??00010000010?00010100?00000000100100?00?0002001?00???111010100000010??0000100001001101  
1010010101000100000110101100000100000??0?011100110001101?100?10?00111101110111?111110

Volkheimeria

??  
?????????????????????10?200010?0?0?0??0?0?00000110?0?00000010000001110000?1?1?0?0??0?0?0?0?  
0?  
0?001?00?0001?001010101001??

'Barapasaurus\_tagorei'

??  
??????101112?010??1000?0?0?0??0?  
1100?0?0?0?0?00000000100??0?000?010??0?0?0?1?00?011000000000000?00?????101101001110100?????  
?????011000?01000000010?0111000100?0101111??1?10??010?0?????1??11?0

Spinophorosaurus

??  
????011????????????????????0000000??100?000?0110?0?1000?010?100????000??110?0??0000[0  
1]0????2??????????1??0????????????????  
??

'Cetiosaurus\_oxoniensis'

??  
??????????????????101102?00?0000010110100?01000110?000??20010100?1101000?111[0 1]?1011000[0  
1]0?10??1??0?02?00000000?0?0?100?001000200?000?  
0??????????0110000010000001?0?01110011001100????????????????????????????????????

Cetiosaurus\_Rutland

??

????????????????101111?0?110000?01?0010?111?011????100???01100?11?1?00?111[0 1]01011100[0  
1]0????????????0??100  
00??0110????1??

'Patagosaurus\_fariasi'

??  
????????????????100112100111000000110110?300001010?00100000001100?11011000111[0 1]01011100[0  
1]0????21?0010010010000000?00?00000010002002?01????????1????????????????????????????????????  
?????????011000001000000?11001110011001????????????????????????????????????

Cetiosauriscus\_stewarti

??  
??  
???1??  
??

Omeisaurus

11001?0000110?1???010??000??001010011000001011011?000?1???11100?0?0?00?0?001100000  
00?1???111?01101112010040111230000??[1 2]000101100100?21000[1  
2]111001100000100100?111101001?11?0??00210010?2110100?10000000000100100?00?0002001?00???11  
00001100000?000?000000010011011010010101000100000011101100000100000010?1111000000001011??  
00101001111111111111110

Mamenchisaurus

11101?0?00111011000110??0?00??00?010010000?010?1?111000?0???101?00?????0?0???1100??  
00110111100?01101112?1004011123[1  
2]000??2000101100101021001211100110110010010001100210011?110???1021001002??0?00?110003000000  
100100?00?0002002?0???1100?0110?0?0?1???00?0?0???11011010011101001101?0001???110000??0000  
0010?011100010001101?11001110?11?101?1?1111??1???

Klamelisaurus

??  
????????????????1??????????000?0?0????0??  
??  
??

'Turiasaurus\_riodevensis'

??  
?????1011120001??111201000??00100101?0101??11[0  
1]1011100010??000001000111011001?1110??0?1100100?????0??002000?0?1??????????????200?????  
???1?????????????????00?0?10110100????10011110000111?????????????????????????????00?11?101010?  
11??11??1?10?111?

'Losillasaurus\_giganteus'

??10????0??1??????????  
?1??1?110101000?0??101201000??0000010110100??11110111001101000100?000111011001?1111??00110?  
?????????0??00200?10[0  
1]100??00000?????1??1011010????1????????????????01?0??010?0?00?1  
1?0???

'Jobaria\_tiguidensis'

11001?000011111?010010??0000??10010100?100000101101110??10??11?000??00?00?0?0?110000  
0??????1100?01101??00001?1??221?00??0000010010100?201010110?0[0  
1]1?11000001000111011001?1110??00000010021101?10100?000??000100?00?100000200100????1?001011  
01010????01000000????11011010011101000111000011111000?01000000011?0111000100?1101110111110  
0111011111?????????

'Haplocanthosaurus\_priscus'

??  
??????????????????[1 2 3  
4]101221?00?11000010010100?011110111001101100010100011001100101101111001101100211011?01001  
00000000100100?10000120010??????10??11000211?000100?00?000????????????????????????????111000?0  
1000000011001110001001??????1?????????????????????????????

Camarasaurus

111010000011111101000000000000100101000101000101101110001101?111000000000100001100  
0001111111110?01101?12021010101232?0[0  
1]1?10100101101011210011110?001011000001000110121001?1110??00210010?21101110100?0000000110  
0100?10000020010000??[0 1]0[0

1]010110100010100100100000001101101001110100111110011111000001100001011001110001001110111  
0101110011101111111111110

'Bellusaurus\_sui'

1????0??11????????????????????10??0??0??0??110????????????000????????????????  
??110101101?12?210??101222000??1000010110100??10011111011011000001000110111001?1110??00210  
1?0?2??0?1?0?10?0300000110?100010000??0?000?????????11[0  
1]000010100100?00?????10110100111010??1?1?????11000?011000010110011101010001101?????????  
????????????????

'Europasaurus\_holgeri'

11101?0?001111?0010010000????10?1?00?01001?01011?1110000101????100000001110?0?1100??  
?1111?111110101101?12?210?0101202100??1101110110100??10011111011021000001000110011001?1101  
??00210010021?001?0?00?00000000100000010000020010000??0?10??11000001010010010000????1011010  
01110100??11?????1111101?0110000?0110?111000100?1101110101110?11?1??1?1?1?1?1??

'Galvesaurus\_herreroi'

??  
?????????????????111220001?2?2?0??12001????1?01111101111100?0?0001101[1  
2]1001?1110??0020001012110??0??01000?0?100?0??0011??0?000?????1??1??????????1????00000?  
101[0 1]0100????????????????????????????????0101100????????????????????????????????????

'Tehuelchesaurus\_benitezii'

??  
??0 1  
2]10001110?001021001011000100?01001?11?0??00201??01[1 2  
3]1??1??110000010100100111?????11001010[0  
1]1110100?????????????1??0011000?1011001111000001????????????????????????????????

'Tastavinsaurus\_sanzi'

??  
??10011?10?00?0?000100011011100?10?0??01210?0?211  
01100100?0100000110010001001111000000??0?1011??  
111101101100001011001111011?011101110?0??0?1111110111?100111?



'Euhelopus\_zdankyi'

01?010000111??110?????0??????00?????????0??????11?????01?1?????????????????100??1??  
??111??11101112?2004?111220101??2000010?1?00111111210110111110??0?100?111011101?1110??002  
1101113?01??1100000?110?000?00?????10110101??????????  
??????1110?100110000101100111100100011011101?11?00?11101?11?1??11??0

'Brachiosaurus\_altithorax'

12101?00??11??1??????????000?10?1110?01000?01011??110??????????0?000000111??0?1????????  
?????1210?0?101112?201??11?232?00112000111??1???10?11111001100000010100?111121001?1100??10  
211?????????????0??10100001??????????  
????????????????????????????1120001000??????0????????????????????????????

'Giraffatitan\_brancai'

121010000011111101001000100000100101000100000101101110000101?111000000001110?001100  
0001111121210?001011120201?0111232[0 1]00?12000111110100?210011111001101020010101011[0  
1]121001?1100??1021?0111211011?0100?01000000100100?1000102001000????10??1101000?0000100110  
0000021010010111101001111111011110110110000101100112100100111011111?1110011110111?11?1??  
11?0

'Paluxysaurus\_jonesi'

????1?????12??  
?[0 1 2]?0?00?01112?201??111232000??2000011110100??1[0 1]002111[1 2]?1111?000010101111?1[0  
1]01?11?0??00210?11121????0??010?001100000010001020010000??0?10??110?000?0??01[0  
1]0?100????21010010111101?0?1?1?11??11?0?1011?0001011001121011?01010111??????????????????  
??????

'Venenosaurus\_dicrocei'

??  
??11??????  
0????0?10?00?001000100010000?000??????11?00001?10?1??????????????????1?10100????1?????????  
?101?0000101?00??

Cedarosaurus

??  
??100?2????????????0????1?????????????????2?1??????????

0????010??000?0?0?0010?1100000100?????????0?00010??1011??????210000111111?00?????????????  
??????????????11210110????0????????????????????????????

'Erketu\_ellisoni'

??  
??????????????????0111221?00??201001101010??01?????  
??  
????????????????????????111?1101?111?0????????????????????

'Chubutisaurus\_insignis'

??  
??2?10?0011?110?01?10??1?10??10?0??0?210??11???  
??010??01000?0?10?0??0001??0?000?????10??1110000111001??????????1101001111?0110??111111???  
??????????00010110111210110011101????????????????????1??????????

'Tendaguria\_tanzaniensis'

??  
??????????????????????111232000????0???00100??100??1?121?1011????????????001????????????????  
??  
??

'Wintonotitan\_wattsi'

??  
??21?121??1?20????????????1??1????????21????????  
001??01011??????0?010001??0?000?????10??11100001110?1????????????01000??1??0?10??111??????11  
????????00010?10??

'Ligabuesaururs\_lenzai'

??

[0 1

2]?0?00101112?201??1?12?3?00??2??0??000010??1001210111?111110000101?11?111001?1110??00211??  
??110000111011??????????210100011????????????  
??????????????????????11210?100111011101????????????????????????

'Phuwiangosaurus\_sirindhornae'

????????????????????????10?????100101????????0??????111??????????1000110?1100?0?1??????????

????????121112?201[2 3 4]?101223?0???2010011100101?21[0 1]0121111001111101001010111121[0  
1]01?1110???002101???2???1???0100?00010?1?0011001110010000??0?10??11000010001?????11???  
10?0000?1101110?????????1100110110001?011001121?01001111110????????????????????

'Andesaurus\_delgadoi'

??  
??  
??001?1?02011000?0?00??0?01020010?0??????????????????0????????????????????????????????  
???1011000110?00??2?????1??

'Mendozasaurus\_neguyelap'

??  
?????????????????????1?1????00?2??0??000110??100021?121?112??0?01??????0?1????????????????  
???0????02000000100000010?210200110??????????111000010001?????1?????10?100011??0?????11?????  
?????????????????????112101?????10??1?????????????1?1??????????

'Malarguesaurus\_florenaciae'

??  
??0  
?1??0100000010?00?000?2111000110?????????1??  
?????????????????2100??

'Argentinosaurus\_hunculensis'

??  
??100120?121?112110000001?111121101?1110??00211???[2  
3]??1?  
????????????????????????????????0????????????????????????????

'Epachthosaurus\_sciuttoi'

??  
??0??10012110?1?111?0000002?111211101?1110??00211??103?  
??????110?030??001??210?210?3?010?010??????????????????0?????????????????111100011?00?10?????????  
11?11?1?1??001?1????1121001101?101?101??????1110111111?01111?

'Malawisaurus\_dixeyi'

1120??????1?1??0??????????????0??100????????

?1?10???1?112?20???101303?10??21010110?0100??1101211121?1122?1200?0201?01110?1?1110???02110  
?1?????????1??0300?000100??0?101010100000????0?11??1????????????00?00110??1011011110001?0??1?  
?111????1????????001111100?1210??????11110??????1????????????1???

'Nemegtosaurus\_mongoliensis'

0020?11?0?12?10?010111?10?0010101101?0?0110?01010?1111??2111011?1100010??00100?1101??  
011??01?1210?00122112?202??  
????????????????????????????0??  
??

'Rapetosaurus\_krausei'

00201?1?1012?1010?01?1110?0011?00001?0?0110?01010?1111??21111??11?0100??1110?1101??0  
11?????1210?00122112?20?40101303?10??2101011010110?10002[0  
1]0121?1122112000020111201101?11?0???11211????3?????????03??????00?0??3?020?21??????????1  
110000?????00?001????101210011?00110????1?1??11110110110001??11?011?11111????????????  
????????????????

'Isisaurus\_colberti'

??  
????????????????????10?301?10??2101010000100??1000200121?1112?12001000111001001?11?0??1210?1?1  
3110?0?????030?1001100000?101310200110????0?11?010100000?001000?00????10111?11101????????  
?????110111?0110001111101??

'Tapuiasaurus\_macedoi'

002?111?0012?1010?0111100??0111011?1000?0??01011?1?1??11111??1?0000??1110??101??  
?0??1??1210?00122112020[2  
3]?1?????0??2?0??11??????100021?121?1112?120?0000110?1101?11?????11??11????????????  
??10?101?????1????11001????1????????????  
??1?2?????????1??????????????????1110?111?

'Trigonosaurus\_pricei'

??  
????????????????????101103?10?20?0011000100?31[0 1]11210121?1122[0  
2]1200002?11211101?11?0???1211??  
??

'Alamosaurus\_sanjuanensis'

?????????????1???  
?????122112?201??1?1303?10??2000?00000100??10?1[1  
2]10121?1?12212000020110211?01?1110???00210?1?1[2  
3]1?0??00231?03001001100000?1013101110100???0?111111100000001111110110?1?111010011100111??1  
111112??????1???00?1111100112??111?11111??????1????????????????

'Opisthocoelicaudia\_skarzynskii'

??  
??1001200121?11[1  
2]2212001020111211101?1110??01210??1131?0?00?221?0?011001100100?101?1020002001000?111110000  
000?00111101111011111210111101111??1111112??1111110110001?1110111210111011111110101101111  
1101111111011110

'Neuquensaurus\_australis'

??  
????????????????????101[2  
3]03000??2?00??000100??1111200121?112211200002?111211101?1110??01211????31?0??1?30?030??00  
1100??0?1013?021?011?1?0??0??11100?0000010110111?????111210011101111?????????????1111?101?0001  
111100112101111?1111?10101101??1110?????1???????

'Saltasaurus\_loricatus'

????????????????????????????????000????1010??010?01??????????????????0100010??1????1?????????  
????????????????????101303000??2001010000100??1111200121?112211200002011111101?1110??01211?  
???311010?1?1?03011001100?0?10131021101101?0??11?01110000000101101110??111210011101111?  
?????????111111011000111100112101111111110????????????????????

'Amazonsaurus\_maranhensis'

??  
??1???111???10?0??????????0?1?01?11????1?????????????  
?0????000[0 1]?0?1???0?1[0  
1]1100002?1?00?????10??0????????????????????  
????????????????????????????????

'Zapalasaurus\_bonapartei'

??  
?????????????????????11?221001??00??  
?????1001000110?0110010000201100??  
????000?0?11?0??

'Histriasaurus\_bocardeli'

??  
??1101??????????10?010??00??001011?11?0??1?010????????  
??  
??

'Comahuesaurus\_windhausenii'

??  
??????122111?203????????????????????????????????????11011110?0210220?1??1??0??001111?11?????1?01????????  
??0?0?20?1400000?10?0????100002011?0??????10??1??????????00?001?????10110111?????????????????  
??????01010000011?0211000100????????????????????????????????????

'Rayososaurus\_agrioensis'

??  
??  
??102111001001????????????????????????????????  
??????????2?1??

'Rebbachisaurus\_garasbae'

??  
?????????21110????????????????????????????????????1101?110?02?0?012101100111001011?11?1??11010??????  
1??11021?1001001????????????????????????????  
??

'Cathartesaura\_anaerobica'

??  
?????????????????????110221001?1?0??000100??  
??????1???0111000?11?100012?1??0?????????????1?21110011?1????????????????????????????  
?????????????????2110001????????????????????????????????????

'Limaysaurus\_tessonei'

?????????1?01????1?1??0000??11??0011111?001?0?10111011?20????100101010110?101????????  
????????????1221111203??110221001??1000010000100??11011110?021011012101100110001011?11?1??11  
0101?0??????[1 2]01[0  
2]0?14000001100001111000020110011?1??10??11021110011010010011??1101001011110100????????????1  
1??00101100001101211000?001?10??1?11??0??10001111??????????

'Demandasaurus\_darwini'

?0?0??10120????????  
2??1?01221111203??110231001??1000010200100??11??1?10?02????0?1?0110111100101??11?????1?01011  
????????????20?140001011001?1010100?0?00?0????10??  
????????????111????1?1211010100??

'Nigersaurus\_taqueti'

00201?10101100?1??1111??0000??11??0011110??11????0111011?2??????100100010??0?1?1101200  
100????2301?0012211112032??110221001??1000010200100?211?11110?02101201111101111001011?11?1??  
?100101?00??1????????140??1?1?0?0?1011?00120110011?11010??110212100000100?00?????10100101??  
????????????????110?0??111?????1211010100?????????1????????????????????????????????????

'Suwassea\_emiliae'

0121???1??2?????????1??01??????00?00??11100?0??1??0?10??????0??0?0?????????1?11????  
????2??1??21110????0111221000??100101010??1??110?11?????1021?????????????????1????????????110  
0??????0????1??0000?000????????????2????????????????  
??

'Amargasaurus\_cazau'i'

??????????2?011?????????100??10?01100011110011111?????????????0011101001?0?111????????  
????????????????????11110211000?????1?1101001?10?01020110?1?1?1100210110?10?001001?11?0??00010  
1??02??1?????0?0?0?0?0?????010??0?020?????????????1??0?????0?1?????????1101101001010?00????  
??????11001?????????????1110?0?001?????????1????????????????????????????

'Dicraeosaurus\_hansemani'

0021???1??2??01?????????100??0?01100011110011111?????1?0??10001110100010?1111011??  
??????2311?00112111020311110211000??0?1?1101101?11201020110?1?1?11000101101100001001?11?1???

00010110021?1?0?0110?0200001110010101000002012?0?1?11?00??1100000??00100?0?????11011010011  
10?????????????11100001100000?00101110001001110111011110?111111?11????11???

'Brachytrachelopan\_messai'

??  
?????????????????????1?0?11?????0?????????????201020110?1?1?1?000101101100001001?11?1??000101?????  
??  
??

Apatosaurus

00201?11111201111?111100101100?0010100011101010110110010020?01?00001000000000101?1?0  
01???????2311?0001211102?331111231?0011201?1102101?1131000?110?021011000011001111001001111?0  
??10010110021?11120110?020000111110111000002012?011111001011000001?0011001?00000?1101201  
0010101001111000011111000011000001?0010111100100111011101111011111111?1111?1110

Diplodocus

00201011111201111111110010110010010100011101010110110010020101100001000010100101110  
001101101?2311?10012111020331111231?0011201?0112111?1131000111?021011000011001111001001111  
?0???10110110021111120110?0211101111111111210003012?011111001011000000?1001001?00000011011  
01001110100????????????111000011000000?001011100010111101?101111100111111111111?11110

'Barosaurus\_lentus'

??  
?????????????????????111231?0011?00?1112011?11310001110?021011000011001111001001?11?0???10010110  
02?????0?110?0211101111111111210003012?011?11?00?01????000?????????1?0?0?????0?00?0????????????  
??????11?0?11?0?0?????10111000??11????????1????????????????????????????

;

cnames

{0 Posterolateral\_processes\_of\_premaxilla\_and\_lateral\_processes\_of\_maxilla\_shape  
\_without\_midline\_contact\_  
\_with\_midline\_contact\_forming\_marked\_narial\_depression,\_subnarial\_foramen\_not\_visible\_laterally\_  
{1 Premaxillary\_anterior\_margin\_shape\_without\_step\_ \_with\_marked\_step\_but\_short\_step\_  
\_with\_marked\_and\_long\_step;



{2 Premaxila, ascending process shape in lateral view convex concave, with a large dorsal projection sub-rectilinear and directed posterodorsally;

{3 Premaxilla, external surface without anteroventrally orientated vascular grooves originating from an opening in the maxillary contact vascular grooves present;

{4 Maxillary border of external naris, length short, making up much less than one-fourth narial perimeter long, making up more than one third narial perimeter;

{5 Maxilla, foramen anterior to the preantorbital fenestra absent present;

{6 Preantorbital fenestra absent present, being wide and laterally opened;

{7 Subnarial foramen and exterior maxillary foramen, position well distanced from one another separated by narrow bony isthmus;

{8 Antorbital fenestra much shorter than orbital maximum diameter, less than 85% of orbit subequal to orbital maximum diameter, greater than 85% orbit;

{9 Antorbital fenestra, shape of dorsal margin straight or convex concave;

{10 Antorbital fossa present absent;

{11 External nares position terminal retracted to level of orbit retracted to a position between orbits;

{12 External nares, maximum diameter shorter or longer than orbital maximum diameter;

{13 Orbital ventral margin, anteroposterior length broad, with subcircular orbital margin reduced, with acute orbital margin;

{14 Lacrimal, anterior process present absent;

{15 Jugal contribution to the ventral border of the skull present absent;

{16 Quadratojugal-Maxilla contact absent or small broad;

{17 Jugal-ectopterygoid contact present absent;

{18 Jugal, contribution to antorbital fenestra very reduced or absent large, bordering approximately one-third its perimeter;

{19 Quadratojugal, position of anterior terminus posterior to middle of orbit anterior margin of orbit or beyond;

{20 Quadratojugal, anterior process length short, anterior process shorter than dorsal process long, anterior process more than twice as long as dorsal process;

{21 Quadratojugal, angle\_between\_anterior\_and\_dorsal\_processes  
 \_less\_than\_or\_equal\_to\_90°,\_so\_that\_the\_quadrate\_shaft\_is\_directed\_dorsally\_  
 \_greater\_than\_90°,\_approaching\_130°,\_so\_that\_the\_quadrate\_shaft\_slants\_posterodorsally\_;

{22 Ventral\_edge\_of\_anterior\_surface\_of\_the\_quadratejugal\_\_straight,\_not\_expanded\_ventrally\_  
 \_concave\_due\_to\_a\_ventral\_expansion\_of\_the\_anterior\_region\_;

{23 Squamosal\_contribution\_to\_the\_supratemporal\_fenestra  
 \_present,\_the\_squamosal\_is\_well\_visible\_in\_dorsal\_view\_\_reduced\_or\_absent\_;

{24 Squamosal-quadratojugal\_contact\_present\_\_absent\_;

{25 Squamosal,\_posteroventral\_margin\_smooth\_\_"with\_prominent,\_ventrally\_directed\_"prong"\_\_;

{26 Prefrontal\_posterior\_process\_size\_small,\_not\_projecting\_far\_posterior\_of\_frontal-nasal\_suture\_  
 \_elongate,\_approaching\_parietal\_;

{27 Prefrontal,\_posterior\_process\_shape\_flat\_\_hooked\_;

{28 Prefrontal,\_anterior\_process\_absent\_\_present\_;

{29 Prefrontal-Frontal\_contact\_width  
 \_large,\_equal\_or\_longer\_than\_the\_anteroposterior\_length\_of\_the\_prefrontal\_  
 \_narrow,\_less\_than\_half\_the\_anteroposterior\_length\_of\_the\_prefrontal\_;

{30 Postorbital,\_ventral\_process\_shape\_transversely\_narrow\_\_broader\_transversely\_than\_anteroposteriorly\_;

{31 Postorbital,\_posterior\_process\_present\_\_absent\_;

{32 Postorbital,\_posterior\_margin\_articulating\_with\_the\_squamosal\_\_with\_tapering\_posterior\_process\_  
 \_with\_a\_deep\_posterior\_process\_;

{33 Frontal\_contribution\_to\_supratemporal\_fossa\_present\_\_absent\_;

{34 Frontals,\_midline\_contact\_(symphysis)\_sutured\_\_or\_fused\_in\_adult\_individuals\_;

{35 Frontal,\_anteroposterior\_length\_approximately\_twice\_\_or\_less\_than\_minimum\_transverse\_breadth\_;

{36 Frontal-nasal\_suture,\_shape\_flat\_or\_slightly\_bowed\_anteriorly\_\_V-shaped,\_pointing\_posteriorly\_;

{37 Frontals,\_dorsal\_surface\_without\_paired\_grooves\_facing\_anterodorsally\_  
 \_grooves\_present,\_extend\_on\_to\_nasal\_;

{38 Frontal,\_contribution\_to\_dorsal\_margin\_of\_orbit\_less\_than\_1.5\_times\_the\_contribution\_of\_prefrontal\_  
 \_at\_least\_1.5\_times\_the\_contribution\_of\_prefrontal\_;

{39 Parietal\_occipital\_process,\_dorsoventral\_height\_short,\_less\_than\_the\_diameter\_of\_the\_foramen\_magnum\_  
 \_deep,\_nearly\_twice\_the\_diameter\_of\_the\_foramen\_magnum\_;

{40 Parietal\_contribution\_to\_post-temporal\_fenestra\_present\_absent\_;

{41 Parietal\_distance\_separating\_supratemporal\_fenestrae\_less\_than\_or\_twice\_the\_long\_axis\_of\_supratemporal\_fenestra\_;

{42 Postparietal\_foramen\_absent\_present\_;

{43 Paroccipital\_process\_distal\_terminus\_straight\_slightly\_expanded\_surface\_rounded\_tongue-like\_process\_;

{44 Supratemporal\_fenestra\_present\_absent\_;

{45 Supratemporal\_fenestra\_long\_axis\_orientation\_anteroposterior\_transverse\_;

{46 Supratemporal\_fenestra\_maximum\_diameter\_much\_longer\_than\_or\_subequal\_to\_that\_of\_foramen\_magnum\_;

{47 Supratemporal\_region\_anteroposterior\_length\_temporal\_bar\_longer\_or\_shorter\_anteroposteriorly\_than\_transversely\_;

{48 Supratemporal\_fossa\_lateral\_exposure\_not\_visible\_laterally\_obscured\_by\_temporal\_bar\_visible\_laterally\_temporal\_bar\_shifted\_ventrally\_;

{49 Supraoccipital\_sagittal\_nuchal\_crest\_broad\_weakly\_developed\_narrow\_sharp\_and\_distinct\_;

{50 Laterotemporal\_fenestra\_anterior\_extension\_posterior\_to\_orbit\_ventral\_to\_orbit\_;

{51 Quadrate\_fossa\_absent\_present\_;

{52 Quadrate\_fossa\_depth\_shallow\_deeply\_invaginated\_;

{53 Quadrate\_fossa\_orientation\_posterior\_posterolateral\_;

{54 Quadrate\_articular\_surface\_shape\_quadrangular\_in\_ventral\_view\_oriented\_transversely\_roughly\_triangular\_in\_shape\_or\_thin\_crescent-shaped\_surface\_with\_anteriorly\_directed\_medial\_process\_;

{55 Quadrate\_articular\_surface\_shape\_quadrangular\_in\_ventral\_view\_oriented\_transversely\_or\_roughly\_triangular\_in\_shape\_thin\_crescent-shaped\_surface\_with\_anteriorly\_directed\_medial\_process\_;

{56 Palatobasal\_contact\_shape\_pterygoid\_with\_small\_facet\_dorsomedially\_orientated\_hook\_or\_rocker-like\_surface\_for\_basipterygoid\_articulation\_;

{57 Pterygoid\_transverse\_flange\_(i.e.\_ectopterygoid\_process)\_position\_posterior\_of\_orbit\_between\_orbit\_and\_antorbital\_fenestra\_anterior\_to\_antorbital\_fenestra\_;

{58 Pterygoid\_quadrate\_flange\_size\_large\_palatobasal\_and\_quadrate\_articulations\_well\_separated\_small\_palatobasal\_and\_quadrate\_articulations\_approach\_;

{59 Pterygoid, palatine ramus shape straight, at level of dorsal margin of quadrate ramus stepped, raised above level of quadrate ramus ;

{60 Pterygoid, sutural contact with ectopterygoid broad, along the medial or lateral surface narrow, restricted to the anterior tip of the ectopterygoid ;

{61 Palatine, lateral ramus shape plate-shaped (long maxillary contact) rod-shaped (narrow maxillary contact) ;

{62 Epipterygoid present absent ;

{63 Vomer, anterior articulation maxilla premaxilla ;

{64 Supraoccipital, height twice subequal to or less than height of foramen magnum ;

{65 Paroccipital process, ventral non-articular process absent present ;

{66 Crista prootica, size rudimentary expanded laterally into dorsolateral process ;

{67 Basisphenoid processes, length short, approximately twice or elongate, at least four times basal diameter ;

{68 Basisphenoid processes, angle of divergence approximately 45° less than 30° ;

{69 Basal tubera, anteroposterior depth approximately half dorsoventral height sheet-like, 20% dorsoventral height ;

{70 Basal tubera, breadth much broader than or narrower than occipital condyle ;

{71 Basal tubera distinct from basisphenoid reduced to slight swelling on ventral surface of basisphenoid ;

{72 Basal tubera, shape of posterior face convex slightly concave ;

{73 Basisphenoid depression between foramen magnum and basal tubera absent present ;

{74 Basisphenoid/basisphenoid recess present absent ;

{75 Basisphenoid/quadrate contact absent present ;

{76 Basisphenoid, sagittal ridge between basisphenoid processes absent present ;

{77 Basisphenoid processes, orientation perpendicular to or angled approximately 45° to skull roof ;

{78 Basisphenoid, area between the basisphenoid processes and parasphenoid rostrum is a mildly concave subtriangular region forms a deep slot-like cavity that passes posteriorly between the bases of the basisphenoid processes ;

{79 Occipital\_region\_of\_skull\_shape  
 \_anteroposteriorly\_deep,\_paroccipital\_processes\_oriented\_posterolaterally\_  
 \_flat,\_paroccipital\_processes\_oriented\_transversely\_;

{80 Dentary\_depth\_of\_anterior\_end\_of\_ramus\_slightly\_less\_than\_that\_of\_dentary\_at\_midlength\_  
 \_150%\_minimum\_depth\_;

{81 Dentary\_anteroventral\_margin\_shape\_gently\_rounded\_\_sharply\_projecting\_triangular\_process\_;

{82 Dentary\_symphysis\_orientation\_angled\_15°\_or\_more\_anteriorly\_to\_  
 \_or\_perpendicular\_to\_axis\_of\_jaw\_ramus\_;

{83 Dentary\_cross-sectional\_shape\_of\_symphysis\_oblong\_or\_rectangular\_  
 \_subtriangular,\_tapering\_sharply\_towards\_ventral\_extreme\_\_subcircular\_;

{84 Dentary\_tuberocity\_on\_labial\_surface\_near\_symphysis\_absent\_\_present\_;

{85 Mandible\_coronoid\_eminence\_strongly\_expressed,\_clearly\_rising\_above\_plane\_of\_dentigerous\_portion\_  
 \_absent\_;

{86 External\_mandibular\_fenestra\_present\_\_absent\_;

{87 Surangular\_depth\_less\_than\_twice\_\_or\_more\_than\_two\_and\_one-  
 half\_times\_maximum\_depth\_of\_the\_angular\_;

{88 Surangular\_ridge\_separating\_adductor\_and\_articular\_fossae\_absent\_\_present\_;

{89 Adductor\_fossa\_medial\_wall\_depth\_shallow\_\_deep,\_prearticular\_expanded\_dorsoventrally\_;

{90 Splenial\_posterior\_process\_position\_overlapping\_angular\_  
 \_separating\_anterior\_portions\_of\_prearticular\_and\_angular\_;

{91 Splenial\_posterodorsal\_process\_present,\_approaching\_margin\_of\_adductor\_chamber\_\_absent\_;

{92 Coronoid\_size\_extending\_to\_dorsal\_margin\_of\_jaw\_\_reduced,\_not\_extending\_dorsal\_to\_splenial\_  
 \_absent\_;

{93 Tooth\_rows\_shape\_of\_anterior\_portions\_narrowly\_arched,\_anterior\_portion\_of\_tooth\_rows\_V-shaped\_  
 \_broadly\_arched,\_anterior\_portion\_of\_tooth\_rows\_U-shaped\_\_rectangular,\_tooth-  
 bearing\_portion\_of\_jaw\_perpendicular\_to\_jaw\_rami\_;

{94 Tooth\_rows\_length\_extending\_to\_orbit\_\_restricted\_anterior\_to\_orbit\_  
 \_restricted\_anterior\_to\_antorbital\_fenestra\_\_restricted\_anterior\_to\_subnarial\_foramen\_;

{95 Dentary\_teeth\_number\_greater\_than\_20\_\_10-17\_\_9\_or\_fewer\_;

{96 Replacement\_teeth\_per\_alveolus\_number\_two\_or\_fewer\_\_more\_than\_four\_;

{97 Lateral\_plate\_absent\_present\_;

{98 Teeth\_orientation\_perpendicular\_or\_oriented\_anteriorly\_relative\_to\_jaw\_margin\_;

{99 Tooth\_crowns\_orientation\_aligned\_along\_jaw\_axis\_crowns\_do\_not\_overlap\_aligned\_slightly\_anterolingually\_tooth\_crowns\_overlap\_;

{100 Crown-to-crown\_occlusion\_absent\_present\_;

{101 Occlusal\_pattern\_interlocking\_V-shaped\_facets\_high-angled\_planar\_facets\_low-angled\_planar\_facets\_;

{102 Tooth\_crowns\_cross-sectional\_shape\_at\_mid-crown\_elliptical\_D-shaped\_cylindrical\_;

{103 Enamel\_surface\_texture\_(wrinkling)\_absent\_present\_;

{104 Enamel\_surface\_texture\_(wrinkling)\_coverage\_only\_partial\_coverage\_on\_tooth\_surface\_wrinkling\_all\_over\_tooth\_surface\_;

{105 Enamel\_surface\_texture\_smooth\_finely\_wrinkled\_coarsely\_wrinkled\_pebbly\_wrinkled\_;

{106 Thickness\_of\_enamel\_asymmetric\_labiolingually\_absent\_present\_;

{107 Marginal\_tooth\_denticles\_present\_absent\_on\_posterior\_edge\_absent\_on\_both\_anterior\_and\_posterior\_edges\_;

{108 Teeth\_longitudinal\_grooves\_on\_lingual\_aspect\_absent\_present\_;

{109 SI\_values\_for\_tooth\_crowns\_less\_than\_3.0\_3.0-4.0\_4.0-5.0\_more\_than\_5.0\_;

{110 Cervical\_vertebrae\_number\_10\_or\_fewer\_12\_13-14\_15\_16\_or\_more\_;

{111 Atlas\_intercentrum\_occipital\_facet\_shape\_rectangular\_in\_lateral\_view,length\_of\_dorsal\_aspect\_subequal\_to\_that\_of\_ventral\_aspect\_expanded\_anteroventrally\_in\_lateral\_view,anteroposterior\_length\_of\_dorsal\_aspect\_shorter\_than\_that\_of\_ventral\_aspect\_;

{112 Cervical\_centra\_articulations\_amphicoelous\_opisthocoelous\_;

{113 Cervical\_centra\_ventral\_surface\_is\_flat\_or\_slightly\_convex\_transversely\_transversely\_concave\_;

{114 Cervical\_centra\_midline\_keels\_on\_ventral\_surface\_prominent\_and\_plate-like\_reduced\_to\_low\_ridges\_or\_absent\_;

{115 Cervical\_centra\_pleurocoels\_absent\_present\_with\_well\_defined\_anterior,dorsal,and\_ventral\_edges,but\_not\_the\_posterior\_one\_present\_with\_well\_defined\_edges\_present\_but\_very\_reduced\_in\_size\_;

{116 Cervical\_centra,\_pleurocoels \_singles\_without\_division\_  
divided\_by\_a\_bone\_septum,\_resulting\_in\_an\_anterior\_and\_a\_posterior\_lateral\_excavation\_  
\_divided\_in\_three\_or\_more\_lateral\_excavations,\_resulting\_in\_a\_complex\_morphology  
\_with\_a\_well\_defined\_anterior\_excavation\_and\_a\_posterior\_smooth\_fossa;

{117 Cervical\_vertebrae,\_height\_divided\_width\_(measured\_in\_its\_posterior\_articular\_surface)  
\_higher\_than\_1.1\_\_around\_1\_\_between\_0.9\_and\_0.7\_\_smaller\_than\_0.7;

{118 Cervical\_centra,\_small\_notch\_in\_the\_dorsal\_margin\_of\_the\_posterior\_articular\_surface\_absent\_  
\_present\_;

{119 Cervical\_vertebrae,\_neural\_arch\_lamination\_well\_developed,\_with\_well\_marked\_laminae\_and\_fossae\_  
\_rudimentary,\_with\_diapophyseal\_laminae\_absents\_or\_very\_slightly\_marked\_;

{120  
Cervical\_vertebrae\_with\_an\_accessory\_lamina,\_which\_runs\_from\_the\_postzygodiapophyseal\_lamina\_(PODL)  
\_up\_to\_the\_spinoprezygapophyseal\_lamina\_(SPRL)\_absent\_\_present\_;

{121 Cervical\_vertebra,\_pre-epiphyses absent present;

{122 Cervical\_vertebra,\_epiphyses absent present;

{123 Cervical\_centra,\_internal\_pneumaticity\_absent\_\_present\_with\_singles\_and\_wide\_cavities\_  
\_present,\_with\_several\_small\_and\_complex\_internal\_cavities\_;

{124 Anterior\_cervical\_vertebrae,\_prespinal\_lamina\_absent\_\_present\_;

{125 Anterior\_cervical\_vertebrae,\_neural\_spine\_shape\_single\_\_bifid\_;

{126 Middle\_and\_posterior\_cervical\_vertebrae,\_prespinal\_lamina\_absent\_\_present\_;

{127 Middle\_cervical\_vertebrae,\_lateral\_fossae\_on\_the\_prezygapophysis\_process\_absent\_\_present\_;

{128 Middle\_cervical\_vertebrae,\_height\_of\_the\_neural\_arch  
\_less\_than\_the\_height\_of\_the\_posterior\_articular\_surface\_  
\_higher\_than\_the\_height\_of\_the\_posterior\_articular\_surface\_;

{129 Middle\_cervical\_centrum,\_anteroposterior\_length\_divided\_the\_height\_of\_the\_posterior\_articular\_surface  
\_less\_than\_4\_\_more\_than\_4\_;

{130 Middle\_and\_posterior\_cervical\_vertebrae,\_morphology\_of\_the\_centroprezygapophyseal\_lamina\_single\_  
\_dorsally\_divided,\_resulting\_in\_a\_lateral\_and\_medial\_lamina,\_being\_the\_medial\_lamina\_linked\_with\_the\_intr  
aprezygapophyseal\_lamina\_and\_not\_with\_the\_prezygapophysis\_

\_divided,\_resulting\_in\_the\_presence\_of\_a\_?true?\_divided\_centroprezygapophyseal\_lamina,\_which\_is\_dorsally  
 \_connected\_to\_the\_prezygapophysis\_;

{131 Middle\_and\_posterior\_cervical\_vertebrae,\_morphology\_of\_the\_centropostzygapophyseal\_lamina\_(CPOL)  
 \_single\_\_divided,\_with\_the\_medial\_part\_contacting\_the\_intrapostzygapophyseal\_lamina\_;

{132 Middle\_and\_posterior\_cervical\_vertebrae,\_articular\_surface\_of\_zygapophyses\_flat\_  
 \_transversally\_convex\_;

{133 Posterior\_cervical\_vertebrae,\_lateral\_profile\_of\_the\_neural\_spine  
 \_displays\_steeply\_sloping\_cranial\_and\_caudal\_faces\_  
 \_displays\_steeply\_sloping\_cranial\_face\_and\_noticeably\_less\_steep\_caudal\_margin\_;

{134 Posterior\_cervical\_vertebrae,\_neural\_spine\_shape\_without\_a\_great\_lateral\_expansion\_  
 \_laterally\_expanded,\_being\_equal\_or\_wider\_than\_the\_vertebral\_centrum\_;

{135 Posterior\_cervical\_and\_anterior\_dorsal\_vertebrae,\_neural\_spine\_shape\_single\_\_bifid\_;

{136 Posterior\_cervical\_and\_anterior\_dorsal\_bifid\_neural\_spines,\_median\_tubercle\_absent\_\_present\_;

{137 Number\_of\_dorsal\_vertebrae\_14\_or\_more\_13 12 10;

{138 Dorsal\_centra,\_pleurocoels\_absent\_\_present\_;

{139 Dorsal\_vertebrae,\_transverse\_processes\_are\_directed\_laterally\_or\_slightly\_upwards\_  
 \_are\_directed\_strongly\_dorsolaterally\_;

{140 Dorsal\_vertebrae,\_distal\_end\_of\_the\_transverse\_process  
 \_curves\_smoothly\_into\_the\_dorsal\_surface\_of\_the\_process\_  
 \_is\_set\_off\_from\_the\_dorsal\_surface,\_the\_latter\_having\_a\_distinct\_dorsally\_facing\_flattened\_area\_;

{141 Dorsal\_vertebrae,\_non\_bifid\_neural\_spine\_in\_anterior\_or\_posterior\_view  
 \_posses\_subparallel\_lateral\_margins\_\_posses\_lateral\_margins\_which\_slightly\_diverge\_dorsally\_  
 \_posses\_lateral\_margins\_which\_strongly\_diverge\_dorsally\_;

{142 Dorsal\_centra,\_pneumatic\_structures\_absent,\_dorsal\_centra\_with\_solid\_interna\_structure\_  
 \_present,\_dorsal\_centra\_with\_simple\_and\_big\_air\_spaces\_  
 \_present,\_dorsal\_centra\_with\_small\_and\_complex\_air\_spaces\_;

{143 Anterior\_and\_middle\_dorsal\_neural\_spines,\_spinoprezygapophyseal\_lamina\_(SPRL)\_absent\_\_present\_;

{144 Posterior\_dorsal\_neural\_spines,\_spinoprezygapophyseal\_lamina\_(SPRL)\_absent\_\_present\_;

{145 Dorsal\_vertebrae,\_single\_not\_bifid\_neural\_spines,\_single\_prespinal\_lamina\_(PRSL)\_absent\_\_present\_;



{146 Dorsal\_vertebrae,\_single\_not\_bifid\_neural\_spines,\_single\_prespinal\_lamina\_(PRSL)  
\_rough\_and\_wide,\_present\_in\_the\_dorsalmost\_part\_of\_the\_neural\_spine\_  
\_rough\_and\_wide,\_extended\_trough\_almost\_all\_the\_neural\_spine\_\_smooth\_and\_narrow\_;

{147

Dorsal\_vertebrae\_with\_single\_neural\_spines,\_middle\_single\_fossa\_projected\_trough\_the\_midline\_of\_the\_ne  
ural\_spine\_present\_\_absent\_;

{148

Dorsal\_vertebrae\_with\_single\_neural\_spines,\_middle\_single\_fossa,\_projected\_through\_the\_midline\_of\_the\_ne  
ural\_spine\_relatively\_wide\_median\_simple\_fossa\_\_a\_thin\_median\_simple\_fossa\_  
\_extremely\_reduced\_median\_simple\_fossa\_;

{149 Anterior\_dorsal\_centra,\_articular\_face\_shape\_\_amphicoelous\_\_opisthocoelous\_;

{150 Anterior\_and\_middle\_dorsal\_centra,\_pleurocoels\_have\_rounded\_caudal\_margins\_  
\_have\_tapering,\_acute\_caudal\_margins\_;

{151 Middle\_dorsal\_neural\_arches\_in\_lateral\_view,\_anterior\_edge\_of\_the\_neural\_spine  
\_project\_anteriorly\_to\_the\_diapophysis\_\_converge\_with\_the\_diapophysis\_  
\_project\_posteriorly\_to\_the\_diapophysis\_;

{152 Anterior\_and\_middle\_dorsal\_vertebrae,\_zygapophyseal\_articulation\_angle  
\_horizontal\_or\_slightly\_posteroventrally\_oriented\_\_posteroventrally\_oriented\_(around\_30°)\_  
\_strongly\_posteroventrally\_oriented\_(more\_than\_40°)\_;

{153 Middle\_to\_posterior\_dorsal\_centra,\_ventral\_surface\_convex\_transversely\_\_flattened\_  
\_is\_slightly\_concave,\_sometimes\_with\_one\_or\_two\_crests\_;

{154 Middle\_dorsal\_vertebrae,\_hyposphene-hypantrum\_system\_present\_\_absent\_;

{155 Posterior\_dorsal\_vertebrae,\_hyposphene-hypantrum\_system  
\_present\_and\_well\_developed,\_usually\_with\_a\_rhomboid\_shape\_  
\_present\_and\_weakly\_developed,\_mainly\_as\_a\_laminar\_articulation\_  
\_absent\_or\_only\_present\_in\_posteriormost\_dorsal\_vertebrae\_;

{156 Middle\_and\_posterior\_dorsal\_vertebrae,\_transverse\_processes\_length\_short\_  
\_long\_(projecting\_along\_1.5\_the\_articular\_surface\_width)\_;

{157

Mid\_and\_posterior\_dorsal\_vertebrae\_with\_a\_single\_lamina\_(the\_single\_TPOL)\_supporting\_the\_hyposphene\_or\_postzygapophysis\_from\_below\_absent\_present\_;

{158 Middle\_and\_posterior\_dorsal\_vertebrae,\_neural\_canal\_in\_anterior\_view

\_entirely\_surrounded\_by\_the\_neural\_arch\_enclosed\_in\_a\_deep\_fossa,\_enclosed\_laterally\_by\_pedicels\_;

{159 Middle\_and\_posterior\_dorsal\_vertebrae,\_neural\_spine\_height\_approximately\_twice\_the Centrum\_length\_for\_times\_the\_Centrum\_length\_;

{160 Middle\_and\_posterior\_dorsal\_neural\_spines\_orientation\_vertical\_

\_slightly\_inclined,\_with\_an\_angle\_of\_around\_70\_degrees\_

\_strongly\_inclined,\_with\_an\_angle\_not\_bigger\_than\_40\_degrees\_;

{161 Middle\_and\_posterior\_dorsal\_neural\_arches,\_centropostzygapophyseal\_lamina\_(CPOL),\_shape\_simple\_

\_divided\_;

{162 Middle\_and\_posterior\_dorsal\_neural\_arches,\_anterior\_centroparapophyseal\_lamina\_(ACPL)\_absent\_

\_present\_;

{163 Middle\_and\_posterior\_dorsal\_neural\_arches,\_prezygoparapophyseal\_lamina\_(PRPL)\_absent\_present\_;

{164 Middle\_and\_posterior\_dorsal\_neural\_arches,\_posterior\_centroparapophyseal\_lamina\_(PCPL)\_absent\_

\_present\_;

{165 Middle\_and\_posterior\_dorsal\_Centrum\_in\_transverse\_section\_(height:\_width\_ratio)

\_subcircular\_(ratio,\_similar\_to\_1\_or\_a\_bit\_higher)\_

\_slightly\_dorsoventrally\_compressed\_(ratios\_between\_0.8\_and\_1)\_

\_strongly\_compressed\_(ratios\_below\_0.8)\_;

{166 Middle\_and\_posterior\_dorsal\_vertebrae\_neural\_spine,\_triangular\_aliform\_processes\_absent\_

\_present\_but\_do\_not\_project\_far\_laterally\_(not\_as\_far\_as\_caudal\_zygapophyses)\_

\_present\_and\_project\_far\_laterally\_(as\_far\_as\_caudal\_zygapophyses)\_;

{167 Middle\_and\_posterior\_dorsal\_vertebrae,\_spinodiapophyseal\_lamina\_(SPDL)\_absent\_present\_;

{168 Middle\_and\_posterior\_dorsal\_vertebrae,\_accessory\_spinodiapophyseal\_lamina\_absent\_present\_;

{169 Dorsal\_vertebrae,\_spinodiapophyseal\_webbing

\_lamina\_follows\_curvature\_of\_neural\_spine\_in\_anterior\_view\_

\_lamina\_"festooned"\_from\_spine,\_dorsal\_margin\_does\_not\_closely\_follow\_shape\_of\_neural\_spine\_and\_diapophysis\_;

{170 Anterior\_dorsal\_vertebrae,\_spinopostzygapophyseal\_lamina\_(SPOL)\_absent\_present\_;

{171 Anterior\_dorsals,\_single\_intraprezygapophyseal\_lamina\_(stprl) absent present;

{172 Middle\_and\_posterior\_dorsal\_neural\_spines,\_lateral\_spinopostzygapophyseal\_lamina\_(lSPOL)\_absent\_present\_;

{173  
Middle\_and\_posterior\_dorsal\_neural\_arches,\_spinodiapophyseal\_lamina\_(SPDL)\_and\_spinopostzygapophyseal\_lamina\_(lSPOL)\_CONTACT\_absent\_present\_;

{174  
Middle\_and\_posterior\_dorsal\_vertebrae,\_spinodiapophyseal\_(SPDL)\_and\_spinopostzygapophyseal\_lamina\_(lSPOL)\_contact\_ventral,\_well\_separated\_from\_the\_triangular\_aliform\_process\_dorsal,\_forms\_part\_of\_the\_triangular\_aliform\_process\_;

{175 Middle\_and\_posterior\_dorsal\_vertebrae,\_height\_of\_neural\_arch\_below\_the\_postzygapophyses\_(pedicel)\_less\_than\_height\_of Centrum\_\_subequal\_to\_or\_greater\_than\_height\_of\_Centrum\_;

{176 Middle\_and\_Posterior\_dorsals,\_absence\_of\_the\_centropostzygapophyseal\_laminae\_(cpol) absent present;

{177 Posterior\_Dorsal\_vertebra,\_centrodiapophyseal\_fossa\_(CDF) absent present;

{178 Posterior\_vertebra,\_internal\_pneumatic\_chamber\_connected\_to\_CDF absent present;

{179 Posterior\_Dorsal\_vertebrae,\_medial\_spinopostzygapophyseal\_lamina\_(mSPOL)\_absent\_present\_and\_forms\_part\_of\_the\_median\_posterior\_lamina\_;

{180 Posterior\_dorsal\_vertebrae,\_transverse\_processes\_lie\_posterior,\_or\_posterodorsal,\_to\_the\_parapophysis\_lie\_vertically\_above\_the\_parapophysis\_;

{181 Posterior\_dorsal\_centra,\_articular\_face\_shape\_amphicoelous\_slightly\_opisthocoelous\_opisthocoelous\_;

{182 Posterior\_dorsal\_vertebrae,\_neural\_spine\_narrower\_transversely\_than\_anteroposteriorly\_broader\_transversely\_than\_anteroposteriorly\_;

{183 Posterior\_dorsal\_vertebra,\_posterior\_centrodiapophyseal\_lamina\_(PCDL)\_has\_an\_unexpanded\_ventral\_tip\_expands\_and\_may\_bifurcate\_toward\_its\_ventral\_tip\_;

{184 Cervical\_ribs,\_distal\_shafts\_of\_longest\_cervical\_ribs\_are\_elongate\_and\_form\_overlapping\_bundles\_are\_short\_and\_do\_not\_project\_beyond\_the\_caudal\_end\_of\_the\_Centrum\_to\_which\_they\_are\_attached\_;

{185 Cervical\_ribs,\_angle\_between\_the\_capitulum\_and\_tuberculum  
 \_greater\_than\_90°,\_so\_that\_the\_rib\_shaft\_lies\_close\_to\_the\_ventral\_edge\_of\_the\_centrum\_  
 \_less\_than\_90°,\_so\_that\_the\_rib\_shaft\_lies\_below\_the\_ventral\_margin\_of\_the\_centrum\_;

{186 Dorsal\_ribs,\_proximal\_pneumatopores\_absent\_present\_;

{187 Anterior\_dorsal\_ribs,\_cross-sectional\_shape\_subcircular\_plank-  
 like,\_anteroposterior\_breadth\_more\_than\_three\_times\_mediolateral\_breadth\_;

{188 Sacral\_vertebrae,\_number\_3\_or\_fewer\_4\_5\_6;

{189 Sacrum,\_sacricostal\_yoke\_absent\_present\_;

{190 Sacral\_vertebrae\_contributing\_to\_acetabulum\_numbers\_1-3\_numbers\_2-4\_;

{191 Sacral\_neural\_spines\_length\_approximately\_twice\_length\_of\_centrum\_  
 \_approximately\_four\_times\_length\_of\_centrum\_;

{192 Sacral\_ribs,\_dorsoventral\_length\_low,\_not\_projecting\_beyond\_dorsal\_margin\_of\_iliac\_  
 \_high\_extending\_beyond\_dorsal\_margin\_of\_iliac\_;

{193 Pleurocoels\_in\_the\_lateral\_surfaces\_of\_sacral centra\_absent\_present\_;

{194 Caudal\_vertebrae,\_number\_35\_or\_fewer\_40\_to\_55\_increased\_to\_70-80\_;

{195 Caudal\_bone\_texture\_solid\_spongy,\_with\_large\_internal\_cells\_;

{196 Caudal\_transverse\_processes\_persist\_through\_caudal\_20\_or\_more\_posteriorly\_  
 \_disappear\_by\_caudal\_15\_disappear\_by\_caudal\_10;

{197 First\_caudal\_centrum\_or\_last\_sacral\_vertebra,\_articular\_face\_shape\_flat\_procoelous\_opisthocoelous\_  
 biconvex;

{198 First\_caudal\_neural\_arch,\_coel\_on\_lateral\_aspect\_of\_neural\_spine\_absent\_present\_;

{199 Anterior\_caudal\_vertebrae,\_neural\_spine\_flat\_spine\_summit\_saddle\_shaped\_spine\_summit;

{200 Anterior\_caudal\_vertebrae,\_transverse\_processes  
 \_ventral\_surface\_directed\_laterally\_or\_slightly\_ventrally\_directed\_dorsally\_;

{201 Anterior\_caudal centra\_(excluding\_the\_first),\_articular\_face\_shape\_amphiplatyan\_or\_amphicoelous\_  
 \_procoelous/distoplatyan\_Slightly\_Procoelous Procoelous  
 \_posterior\_surface\_markedly\_more\_concave\_than\_the\_anterior\_one;

{202 Anterior\_caudal centra,\_pleurocoels\_absent\_present\_;

{203 Anterior\_caudal\_vertebrae,\_ventral\_surfaces\_convex\_transversely\_concave\_transversely\_;

{204 Anterior\_and\_middle\_caudal\_vertebrae,\_ventrolateral\_ridges\_absent\_present\_;

{205 Anterior\_and\_middle\_caudal\_vertebrae,\_triangular\_lateral\_process\_on\_the\_neural\_spine\_absent\_  
\_present\_;

{206 Anterior\_caudal\_transverse\_processes\_shape\_triangular,\_tapering\_distally\_"wing-  
like",\_not\_tapering\_distally\_;

{207 Anterior\_caudal\_neural\_spines,\_transverse\_breadth\_approximately\_50%\_of\_  
\_or\_greater\_than\_anteroposterior\_length\_;

{208 Anterior\_caudal\_transverse\_processes,\_proximal\_depth\_shallow,\_on Centrum\_only\_  
\_deep,\_extending\_from\_Centrum\_to\_neural\_arch\_;

{209 Anterior\_caudal\_transverse\_processes,\_diapophyseal\_laminae\_(ACDL,\_PCDL,\_PRDL,\_PODL)\_absent\_  
\_present\_;

{210 Anterior\_caudal\_transverse\_processes,\_anterior\_centrodiapophyseal\_lamina\_(ACDL),\_shape\_single\_  
\_divided\_;

{211 Anterior\_caudal\_vertebrae,\_hyposphene\_ridge\_absent\_\_present\_;

{212 Anterior\_caudal\_Centrum,\_length\_approximately\_the\_same\_\_or\_doubling\_over\_the\_first\_20\_vertebrae\_;

{213 Anterior\_caudal\_neural\_arches,\_spinoprezygapophyseal\_lamina\_(SPRL)  
\_absent,\_or\_present\_as\_small\_short\_ridges\_that\_rapidly\_fade\_out\_into\_the\_anterolateral\_margin\_of\_the\_spine  
\_present,\_extending\_onto\_lateral\_aspect\_of\_neural\_spine\_;

{214 Anterior\_caudal\_neural\_arches,\_spinoprezygapophyseal\_lamina\_(SPRL)-  
spinopostzygapophyseal\_lamina\_(SPOl)\_contact\_absent\_  
\_present,\_forming\_a\_prominent\_lamina\_on\_lateral\_aspect\_of\_neural\_spine\_;

{215 Anterior\_caudal\_neural\_arches,\_prespinal\_lamina\_(PRSL)\_absent\_\_present\_;

{216 Middle\_caudal\_Centrum,\_shape\_cylindrical\_\_with\_flat\_ventral\_margin\_  
\_quadrangular,\_flat\_ventrally\_and\_laterally\_;

{217 Anterior\_and\_middle\_caudal\_Centrum,\_ventral\_longitudinal\_hollow\_absent\_\_present\_;

{218 Middle\_caudal\_Centrum,\_articular\_face\_shape\_amphiplatyan\_or\_amphicoelous\_\_procoelous/distoplastyan\_  
slightly\_Procoelous procoelous;

{219 Middle\_caudal\_vertebrae,\_location\_of\_the\_neural\_arches  
\_over\_the\_midpoint\_of\_the\_Centrum\_with\_approximately\_subequal\_amounts\_of\_the\_Centrum\_exposed\_at\_eith  
er\_end\_\_on\_the\_anterior\_half\_of\_the\_Centrum\_;

{220 Middle\_caudal\_vertebrae,\_height\_of\_the\_pedicels\_below\_the\_prezygapophysis  
\_low\_with\_curved\_anterior\_edge\_of\_the\_pedicel\_\_high\_with\_vertical\_anterior\_edge\_of\_the\_pedicel\_;

{221 Middle\_caudal\_vertebrae,\_orientation\_of\_the\_neural\_spines\_\_anteriorly\_\_vertical\_  
slightly\_directed\_posteriorly\_strongly\_directed\_posteriorly;

{222 Posterior\_caudal\_vertebrae,\_neural\_spine\_strongly\_displaced\_posteriorly\_absent\_\_present\_;

{223 Middle\_caudal\_vertebrae,\_ratio\_of\_centrum\_length\_to\_centrum\_height  
\_less\_than\_2,\_usually\_1.5\_or\_less\_\_2\_or\_higher\_;

{224 Anterior-  
posterior\_caudal\_vertebrae\_(those\_with\_still\_well\_developed\_neural\_spine)\_,\_neural\_spine\_orientation  
\_vertical\_\_slightly\_directed\_posteriorly\_strongly\_directed\_posteriorly;

{225 Posterior\_Caudals\_centra,\_articular\_face\_shape\_\_anphyplatic\_\_procoelous\_\_opisthocoelous;

{226 Posterior\_caudal\_centra,\_shape\_\_cylindrical\_\_dorsoventrally\_flattened,\_breadth\_at\_least\_twice\_height\_;

{227 Posterior\_caudal\_vertebrae,\_ratio\_of\_length\_to\_height\_less\_than\_5,\_usually\_3\_or\_less\_\_5\_or\_higher\_;

{228 Distalmost\_caudal\_centra,\_articular\_face\_shape\_\_platycoelous\_\_biconvex\_;

{229 Distalmost\_biconvex\_caudal\_centra,\_number\_10\_or\_fewer\_\_more\_than\_30\_;

{230 Distalmost\_biconvex\_caudal\_centra,\_length-to\_height\_ratio\_less\_than\_4\_\_greater\_than\_5\_;

{231 Forked\_chevrons\_\_with\_anterior\_and\_posterior\_projections\_absent\_\_present\_;

{232 Forked\_chevrons,\_distribution\_\_distal\_tail\_only\_\_throughout\_middle\_and\_posterior\_caudal\_vertebrae\_;

{233 Chevrons,\_crus\_bridging\_dorsal\_margin\_of\_haemal\_canal\_present\_\_absent\_;

{234 Chevron\_haemal\_canal,\_depth\_short,\_approximately\_25%  
\_or\_long,\_approximately\_50%\_chevron\_length\_;

{235 Chevrons\_\_persisting\_throughout\_at\_least\_80%\_of\_tail\_\_disappearing\_by\_caudal\_30\_;

{236 Posterior\_chevrons,\_distal\_contact\_\_fused\_\_unfused\_(open)\_;

{237 Posture\_\_bipedal\_\_columnar,\_obligatory\_quadrapedal\_posture\_;

{238 Scapular\_acromion\_process,\_size\_\_Narrow\_  
\_broad,\_width\_more\_than\_150%\_minimum\_width\_of\_blade\_;

{239 Scapular\_blade,\_orientation\_respect\_to\_coracoid\_articulation\_\_perpendicular\_\_forming\_a\_45]\_angle\_;

{240 Scapular\_blade,\_shape\_\_acromial\_edge\_not\_expanded\_\_rounded\_expansion\_on\_acromial\_side\_\_racquet-  
shaped;

{241 Scapula, acromion process dorsal margin concave or straight \_with\_V-shaped\_concavity\_with\_U-shaped\_concavity;

{242 Scapula, highest point of the dorsal margin of the blade  
 \_lower\_than\_the\_dorsal\_margin\_of\_the\_proximal\_end\_  
 \_at\_the\_same\_height\_than\_the\_dorsal\_margin\_of\_the\_proximal\_end\_  
 higher\_than\_the\_dorsal\_margin\_of\_the\_proximal\_end;

{243 Scapula, development of the acromion process \_undeveloped\_ \_well\_developed\_;

{244 Scapular length/minimum blade breadth \_5.5\_or\_less\_ \_5.5\_or\_more\_;

{245 Scapula, ventral margin with a well developed ventro medial process \_absent\_ \_present\_;

{246 Scapular, acromial process position \_lies\_nearly\_glenoid\_level\_ \_lies\_nearly\_midpoint\_scapular\_body\_;

{247 Scapular acromion length \_less\_than\_1/2\_scapular\_length\_ \_at\_least\_1/2\_scapular\_length\_;

{248 Glenoid scapular orientation \_relatively\_flat\_or\_laterally\_facing\_ \_strongly\_beveled\_medially\_;

{249 Scapular blade, cross-sectional shape at base \_flat\_or\_rectangular\_ \_D-shaped\_;

{250 Coracoid, proximodistal length \_less\_than\_the\_length\_of\_scapular\_articulation\_  
 \_approximately\_twice\_the\_length\_of\_scapular\_articulation\_;

{251 Coracoid, anteroventral margin shape \_rounded\_ \_rectangular\_;

{252 Dorsal margin of the coracoid in lateral view  
 \_reaches\_or\_surpasses\_the\_level\_of\_the\_dorsal\_margin\_of\_the\_scapular\_expansion\_  
 \_lies\_below\_the\_level\_of\_the\_scapular\_proximal\_expansion\_and\_separated\_from\_the\_latter\_by\_a\_V-shaped\_notch\_;

{253 Coracoid, Infraglenoid deep groove \_absent\_ \_present\_;

{254 Coracoid, infraglenoid lip \_absent\_ \_present\_;

{255 Sternal plate, shape \_oval\_ \_crescentic\_;

{256 Prominent posterolateral expansion of the sternal plate producing a kidney-shaped profile in dorsal view \_absent\_ \_present\_;

{257 Prominent parasagittal oriented ridge on the dorsal surface of the sternal plate \_absent\_ \_present\_;

{258 Ridge on the ventral surface of the sternal plate \_absent\_ \_present\_;

{259 Ratio of maximum length of sternal plate to the humerus length  
 \_less\_than\_0,75,\_usually\_less\_than\_0,65\_ \_greater\_than\_0,75\_;

{260 Humerus-to-femur ratio \_less\_than\_0.60\_ \_0.60\_to\_0.90\_ \_greater\_than\_0.90;

{261 Humeral\_deltpectoral\_attachment,\_development\_prominent\_\_reduced\_to\_a\_low\_crest\_or\_ridge\_;

{262 Humeral\_deltpectoral\_crest,\_shape\_relatively\_narrow\_throughout\_length\_  
\_markedly\_expanded\_distally\_;

{263 Humeral\_midshaft\_cross-section,\_shape\_circular\_\_elliptical\_;

{264 Humerus,\_RI\_(sensu\_Wilson\_and\_Upchurch,\_2003)\_Gracile\_(less\_than\_0,27)\_\_medium\_(0,28-0,32)\_  
Robust\_(more\_than\_0,33);

{265 Humeral\_distal\_condyles,\_articular\_surface\_shape\_restricted\_to\_distal\_portion\_of\_humerus\_  
\_exposed\_on\_anterior\_portion\_of\_humeral\_shaft\_;

{266 Humeral\_distal\_condyle,\_shape\_divided\_\_flat\_;

{267 Humeral,\_lateral\_margin\_medially\_deflected\_\_almost\_straight\_until\_the\_half\_length\_or\_even\_more\_;

{268 Humeral\_proximolateral\_corner,\_shape\_rounded,\_the\_dorsal\_surface\_is\_well\_convex\_  
\_pronounced\_/\_square,\_the\_dorsal\_surface\_low,\_almost\_flat\_;

{269 Ulnar\_proximal\_condyle,\_shape\_subtriangular\_\_triradiate,\_with\_deep\_radial\_fossa\_;

{270 Ulnar\_proximal\_condylar\_processes,\_relative\_lengths\_subequal\_\_unequal,\_anterior\_arm\_longer\_;

{271 Ulnar\_olecranon\_process,\_development\_prominent,\_projecting\_above\_proximal\_articulation\_  
\_rudimentary,\_level\_with\_proximal\_articulation\_;

{272 Ulna,\_length-to-proximal\_breadth\_ratio\_gracile\_\_stout\_;

{273 Radial\_distal\_condyle,\_shape\_round\_  
\_subrectangular,\_flattened\_posteriorly\_and\_articulating\_in\_front\_of\_ulna\_;

{274 Radius,\_distal\_breadth\_slightly\_larger\_than\_midshaft\_breadth\_  
\_approximately\_twice\_midshaft\_breadth\_;

{275 Radius,\_distal\_condyle\_orientation\_perpendicular\_to\_long\_axis\_of\_shaft\_  
\_beveled\_approximately\_20°\_proximolaterally\_relative\_to\_long\_axis\_of\_shaft\_;

{276 Carpal\_bones,\_number\_3\_or\_more\_\_2\_or\_fewer\_;

{277 Carpal\_bones,\_shape\_round\_\_block-shaped,\_with\_flattened\_proximal\_and\_distal\_surfaces\_;

{278 Metacarpus,\_shape\_spreading\_  
\_bound,\_with\_subparallel\_shafts\_and\_articular\_surfaces\_that\_extend\_half\_their\_length\_;

{279 Metacarpals,\_shape\_of\_proximal\_surface\_in\_articulation\_gently\_curving,\_forming\_a\_90arc\_\_U-  
shaped,\_subtending\_a\_270arc\_;

{280 Longest\_metacarpal-to-radius\_ratio\_close\_to\_0.3\_\_0.45\_or\_more\_;



{281 Metacarpal\_I,\_length\_shorter\_than\_metacarpal\_IV\_\_longer\_than\_metacarpal\_IV\_;

{282 Metacarpal\_I,\_distal\_condyle\_shape\_divided\_\_undivided\_;

{283 Metacarpal\_I\_distal\_condyle,\_transverse\_axis\_orientation  
\_beveled\_approximately\_20]\_respect\_to\_axis\_of\_shaft\_  
\_proximodistally\_or\_perpendicular\_with\_respect\_to\_axis\_of\_shaft\_;

{284 Manual\_digits\_II\_and\_III,\_phalangeal\_number\_2-3-4-3-2\_or\_more\_\_reduced,\_2-2-2-2-2\_or\_less\_  
\_absent\_or\_unossified\_;

{285 Manual\_phalanx\_I.1,\_shape\_rectangular\_\_wedge-shaped\_;

{286 Manual\_nonungual\_phalanges,\_shape\_longer\_proximodistally\_than\_broad\_transversely\_  
\_broader\_transversely\_than\_long\_proximodistally\_;

{287 Pelvis,\_anterior\_breadth  
\_narrow,\_ilia\_longer\_anteroposteriorly\_than\_distance\_separating\_preacetabular\_processes\_  
\_broad,\_distance\_between\_preacetabular\_processes\_exceeds\_anteroposterior\_length\_of\_ilia\_;

{288 Ilium,\_ischial\_peduncle\_size\_large,\_prominent\_\_low,\_rounded\_;

{289 Ilium,\_dorsal\_margin\_shape\_flat\_\_semicircular\_;

{290 Ilium,\_preacetabular\_process\_shape\_pointed,\_arching\_ventrally\_  
\_semicircular,\_with\_posteroventral\_excursion\_of\_cartilage\_cap\_;

{291 Ilium,\_preacetabular\_process\_orientation\_anterolateral\_to\_body\_axis\_\_perpendicular\_to\_body\_axis\_;

{292 Highest\_point\_on\_the\_dorsal\_margin\_of\_the\_iliac\_crest\_lies\_caudal\_to\_the\_base\_of\_the\_pubic\_process\_  
\_lies\_cranial\_to\_the\_base\_of\_the\_pubic\_process\_;

{293 Pubis\_length\_respect\_to\_ischium\_pubis\_slightly\_smaller\_or\_subequal\_to\_ischium\_  
\_pubis\_larger\_(120%\_+)\_than\_ischium\_;

{294 Pubis,\_ambiens\_process\_development\_small,\_confluent\_with\_anterior\_margin\_of\_pubis\_prominent,\_  
\_projects\_anteriorly\_from\_anterior\_margin\_of\_pubis\_;

{295 Pubic\_apron,\_shape\_flat\_(straight\_symphysis)\_\_canted anteromedially\_(gentle\_S-shaped\_symphysis)\_;

{296 Puboischial\_contact,length\_approximately\_one\_third\_total\_length\_of\_pubis\_\_one-  
half\_total\_length\_of\_pubis\_;

{297 Ischium,\_acetabular\_articular\_surface  
\_maintains\_approximately\_the\_same\_transverse\_width\_throughout\_its\_length\_;

\_is transversely narrower in its central portion and strongly expanded as it approaches the iliac and pubic articulations\_;

{298 Ischium, iliac peduncle with constriction or "neck" absent \_\_present\_;

{299 Ischium, elongate muscle scar on proximal end absent \_\_present\_;

{300 Ischial blade, shape emarginate distal to pubic peduncle \_  
\_no emargination distal to pubic peduncle\_;

{301 Ischia pubic articulation less or equal to the anteroposterior length of pubic pedicel \_  
\_greater than the anteroposterior length of pubic pedicel\_;

{302 Ischia, anteroposterior pubic pedicel width divided the total length of the ischium less than 0,5 \_  
\_0,5 or grate Large;

{303 Ischial distal shaft, shape triangular, depth of ischial shaft increases medially \_  
\_bladelike, medial and lateral depths subequal\_;

{304 Ischial distal shafts, cross-sectional shape V-  
shaped, forming an angle of nearly 50] with each other \_\_flat, nearly coplanar\_;

{305 Ischia, distal end is only slightly expanded \_\_is strongly expanded dorsoventrally\_;

{306 Ichium, angle formed between the shaft and the acetabular line  
\_forming an almost right angle (80-110°) \_\_or a close angle (less than 70°)\_  
close\_angle\_(less\_than\_70°);

{307 Femur, fourth trochanter development prominent \_\_reduced to crest or ridge\_;

{308 Femur, lesser trochanter present \_\_absent\_;

{309 Femur midshaft, transverse diameter subequal to anteroposterior diameter \_\_125-  
150% anteroposterior diameter at least 185% anteroposterior diameter;

{310

Femur, lateral bulge (marked by the lateral expansion and a dorsomedial orientation of the laterodorsal  
margin of the femur, which starts below the femur head ventral margin) absent \_\_present\_;

{311 Femur, pronounced ridge on posterior surface between greater trochanter and head absent \_  
\_present\_;

{312 Femur head position

\_perpendicular to the shaft, rises at the same level than the greater trochanter \_  
\_dorsally directed, rises well above the level of the greater trochanter\_;

{313 Femur, distal condyles relative transverse breadth subequal tibial much broader than fibular;

{314 Femur, distal condyles orientation perpendicular or slightly beveled dorsolaterally or beveled dorsomedially approximately 10 relative to femoral shaft;

{315 Femur, distal condyles articular surface shape restricted to distal portion of femur expanded onto anterior portion of femoral shaft;

{316 Situation of the femoral fourth trochanter on the caudal surface of the shaft, near the midline on the caudomedial margin of the shaft;

{317 Tibial proximal condyle, shape narrow, long axis anteroposterior expanded transversely, condyle subcircular;

{318 Tibial cnemial crest, orientation projecting anteriorly or laterally;

{319 Tibia, distal breadth approximately 125% more than twice midshaft breadth;

{320 Tibial distal posteroventral process, size broad transversely, covering posterior fossa of astragalus shortened transversely, posterior fossa of astragalus visible posteriorly;

{321 Fibula, proximal tibial scar, development not well-marked well-marked and deepening anteriorly;

{322 Fibula, lateral trochanter absent present;

{323 Fibular distal condyle, size subequal to shaft expanded transversely, more than twice midshaft breadth;

{324 Astragalus, shape rectangular wedge shaped, with reduced anteromedial corner;

{325 Astragalus, fibular facet faces laterally faces posterolaterally, anterior margin visible in posterior view;

{326 Astragalus, foramina at base of ascending process present absent;

{327 Astragalus, ascending process length limited to anterior two-thirds of astragalus extending to posterior margin of astragalus;

{328 Astragalus, posterior fossa shape undivided divided by vertical crest;

{329 Astragalus, transverse length 50% more than or subequal to proximodistal height;

{330 Calcaneum present absent or unossified;

{331 Distal tarsals 3 and 4 present absent or unossified;

{332 Metatarsus, posture bound spreading;

{333 Metatarsal I proximal condyle, transverse axis orientation perpendicular to angled ventromedially approximately 15° to axis of shaft;

{334 Metatarsal\_I\_distal\_condyle,\_transverse\_axis\_orientation \_perpendicular\_to\_  
 \_angled\_dorsomedially\_to\_axis\_of\_shaft\_;

{335 Metatarsal\_I\_distal\_condyle,\_posterolateral\_projection \_absent \_present\_;

{336 Metatarsal\_I,\_minimum\_shaft\_width \_less\_than\_that\_of\_metatarsals\_IIIIV\_  
 \_or\_greater\_than\_that\_of\_metatarsals\_IIIIV\_;

{337 Metatarsal\_I\_and\_V\_proximal\_condyle,\_size \_smaller\_than\_  
 \_or\_subequal\_to\_those\_of\_metatarsals\_II\_and\_IV\_;

{338 Metatarsal\_III\_length \_more\_than\_30% \_or\_less\_than\_25%\_that\_of\_tibia\_;

{339 Metatarsals\_III\_and\_IV,\_minimum\_transverse\_shaft\_diameters \_subequal\_to\_  
 \_or\_less\_than\_65%\_that\_of\_metatarsals\_I\_or\_II\_;

{340 Metatarsal\_V,\_length \_shorter\_than \_or\_at\_least\_70%\_length\_of\_metatarsal\_IV\_;

{341 Pedal\_nonungual\_phalanges,\_shape \_longer\_proximodistally\_than\_broad\_transversely\_  
 \_broader\_transversely\_than\_long\_proximodistally\_;

{342 Pedal\_digits\_II-IV,\_penultimate\_phalanges,\_development  
 \_subequal\_in\_size\_to\_more\_proximal\_phalanges \_rudimentary\_or\_absent\_;

{343 Pedal\_unguals,\_orientation \_aligned\_with \_or\_deflected\_lateral\_to\_digit\_axis\_;

{344 Pedal\_digit\_I\_ungual,\_length\_relative\_to\_pedaldigit\_II\_ungual \_subequal\_  
 \_25%\_larger\_than\_that\_of\_digit\_II\_;

{345 Pedal\_digit\_I\_ungual,\_length \_shorter \_or\_longer\_than\_metatarsal\_I\_;

{346 Pedal\_ungual\_I,\_shape \_broader\_transversely\_than\_dorsoventrally \_sickle-  
 shaped,\_much\_deeper\_dorsoventrally\_than\_broad\_transversely\_;

{347 Pedal\_ungual\_IIII,\_shape \_broader\_transversely\_than\_dorsoventrally \_sickle-  
 shaped,\_much\_deeper\_dorsoventrally\_than\_broad\_transversely\_;

{348 Pedal\_digit\_IV\_ungual,\_development \_subequal\_in\_size\_to\_unguals\_of\_pedal\_digits\_II\_and\_III\_  
 \_rudimentary\_or\_absent\_;

{349 Unguals\_of\_pedal\_digit\_II\_and\_III,\_proximal\_dimensions \_as\_broad\_as\_deep\_  
 \_significantly\_broader\_than\_deep\_;

;

ccode + 11 57 94 95 107 109 116 117 123 148 155 166 221 224 240.242 260 264 307 309 \*;

proc /;

comments 0

;

