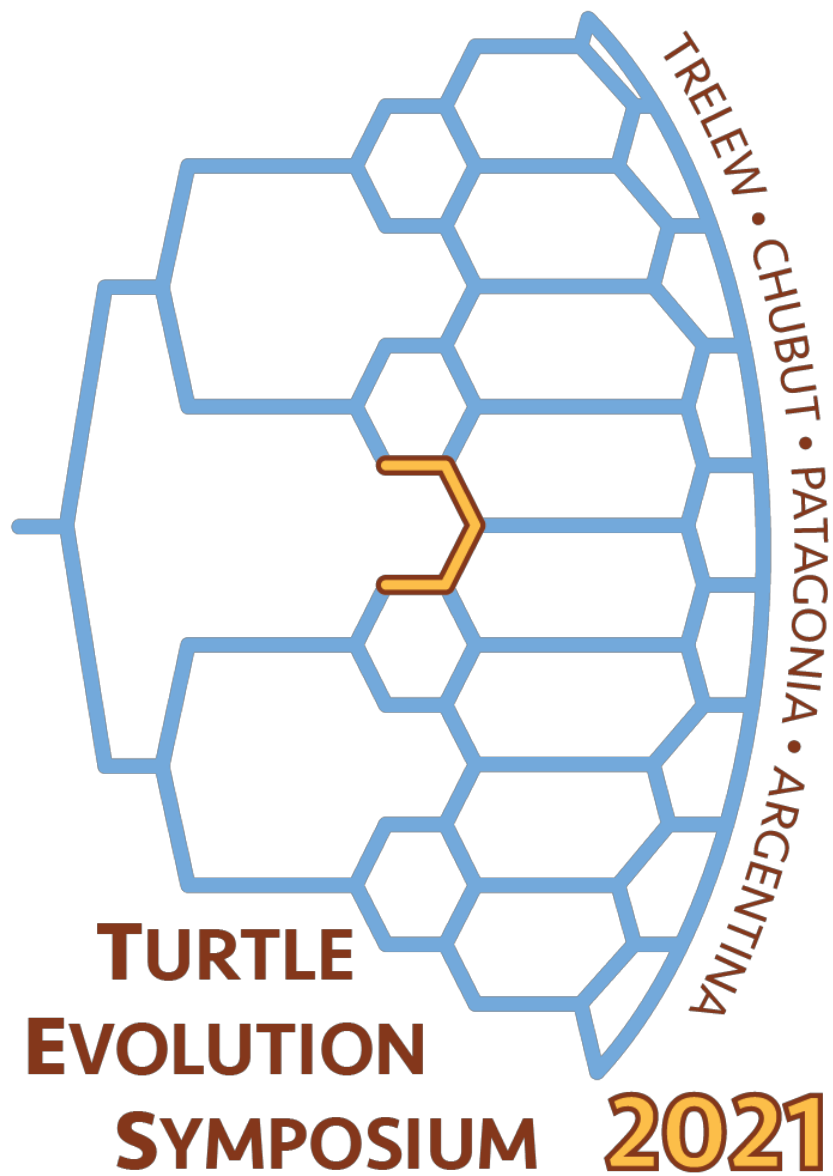


# Turtle Evolution Symposium 2021



## Early Circular

June 2019

Trelew, Chubut, Patagonia, Argentina

## Welcome Message

Following the 2018 Turtle Evolution Symposium that took place in Tokyo (Japan), the Turtle Community Group (TCG) voted to have the next meeting in Trelew, one of the most important city of Chubut Province, in Patagonia, Argentina. The Symposium will take place during early November 2021 at the Museo Paleontológico Egidio Feruglio, a prominent paleontological institution in Argentina.

We are grateful for your choice and delighted for having the opportunity to receive you in Trelew. We promise that we will do our outmost best to provide a well-organized and memorable symposium.

We would like to start our exchange of information with this **Early Circular**, a document that contains some basic information about the Symposium, the Venue, and some initial travelling information that will, hopefully, help you to organize your trip efficiently.

---

## Contact Information

[tes2021@mef.org.ar](mailto:tes2021@mef.org.ar) [preferred method of communication]

*regular mail*

[evlacho@mef.org.ar](mailto:evlacho@mef.org.ar) Evangelos Vlachos, Museo Paleontológico Egidio Feruglio, Av. Fontana 140, 9100, Trelew, Chubut, Argentina

*telephone*

+54 0280 4432100, int. 136 [between 09:00 – 12:00 Argentinian ST (UCT -3)]

---

## Organizers



Juliana Sterli, Assoc. Researcher CONICET | [jsterli@mef.org.ar](mailto:jsterli@mef.org.ar)

Evangelos Vlachos, Assist. Researcher CONICET | [evlacho@mef.org.ar](mailto:evlacho@mef.org.ar)

Carolina Orioabala, PhD Candidate CONICET | [corioabala@mef.org.ar](mailto:corioabala@mef.org.ar)

## Turtle Community Group (TCG)



The TCG is a Google mailing list group that serves as a platform for sharing ideas, news, and research between the members of the paleochelonological community and to improve the communication between us. The TCG started in 2014 and currently contains 104 members from around the globe. Besides regular email, the TCG will be a main source of diffusion of news regarding TES 2021, so please consider subscribing. Note that after TES 2018 in Tokyo, it was decided that TCG will also form the platform for proposing and voting the next TES.

How to subscribe:

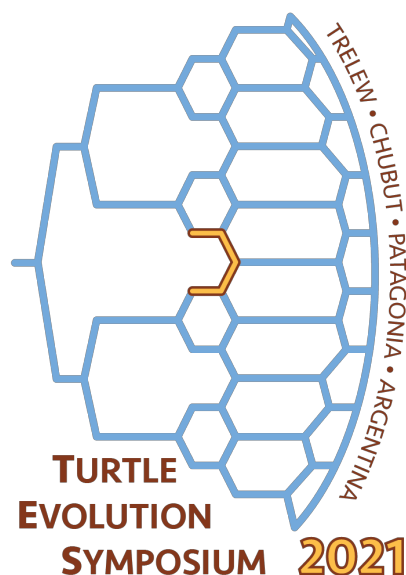
**Option 1.** Ask permission to subscribe at

<https://groups.google.com/forum/#!forum/turtle-community-group>

[see <https://support.google.com/groups/answer/1067205?hl=en> for more information]

**Option 2.** Send an email to Evangelos Vlachos at [evlacho@gmail.com](mailto:evlacho@gmail.com)

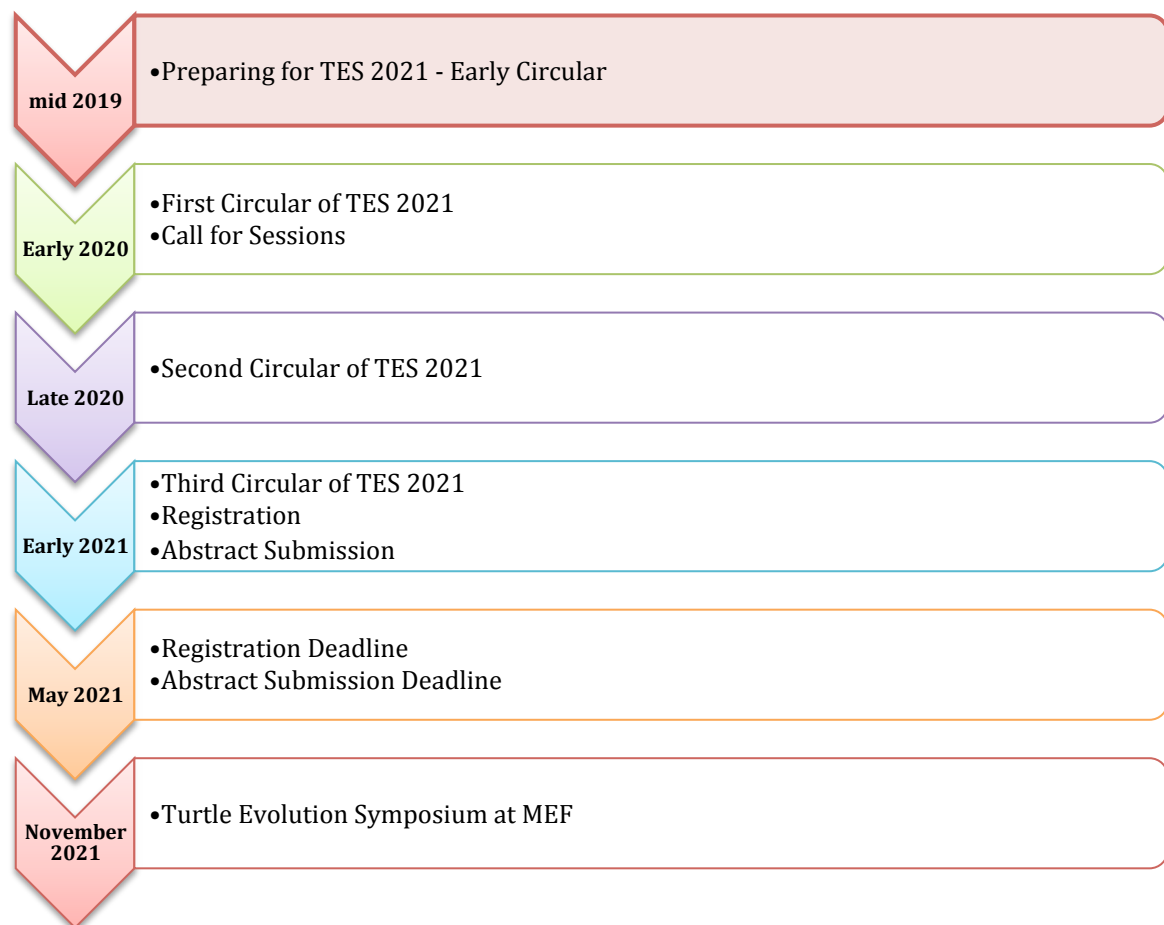
### About the logo:



*The Origin and Evolution of the Turtle Shell,*  
a combination of a cladogram and an abstract turtle shell,  
symbolizing the appearance of the turtle shell as a  
product of evolution.

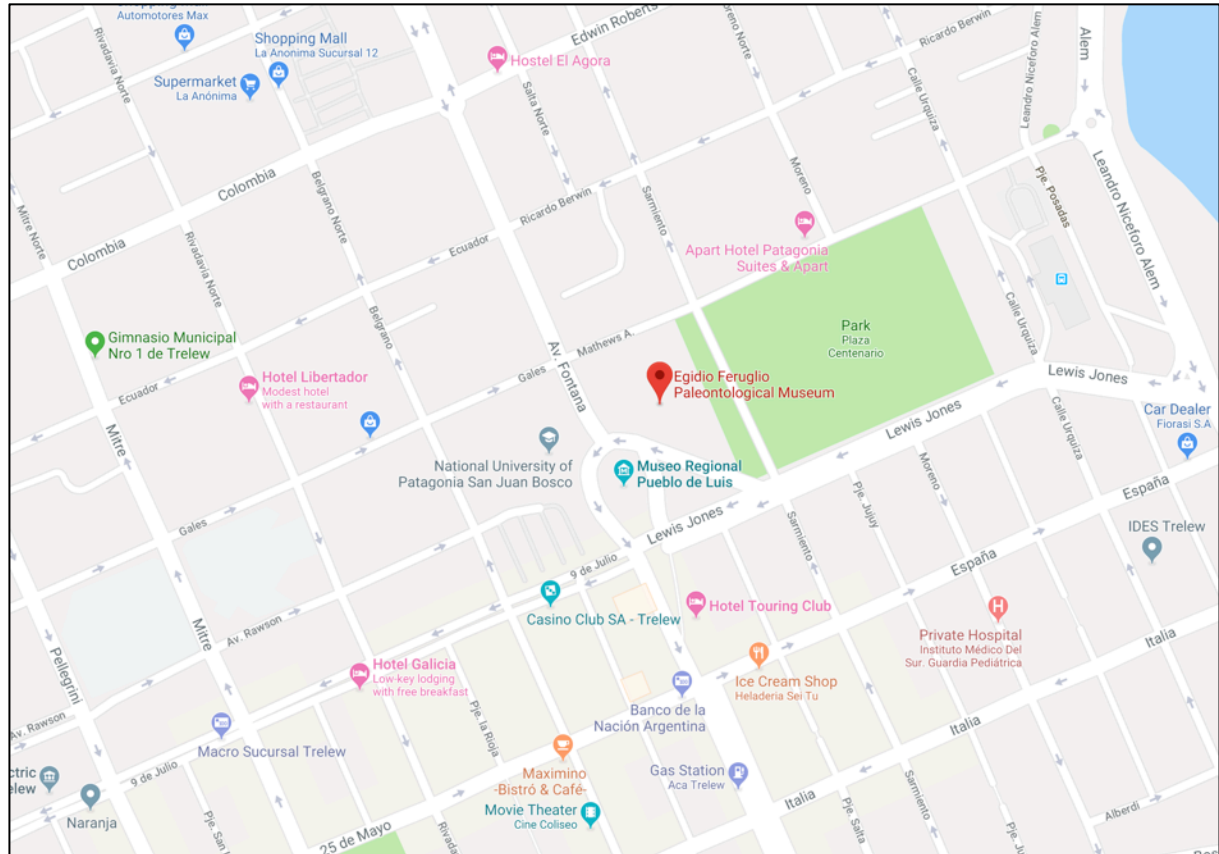
It is colored with the colors of the Argentine flag—sky  
blue, golden yellow, and brown—with an abstract *Sol de  
mayo* in the middle and its 32 rays in the form of clades.

## Preliminary Timeline



## Venue

The TES 2021 will be hosted at the Museo Paleontológico Egidio Feruglio (MEF), at the heart of Trelew, the second largest city of Chubut Province, in Patagonia, Argentina. Detailed information can be found online at <http://mef.org.ar/home/>



The Paleontological Museum Egidio Feruglio (MEF) is a center for scientific activities one of a kind in South America. Delineated by a modern and unconventional design, MEF innovative work is reflect both in its exhibitions as in its products and services. Interpretive tours tell the story of the life forms that lived in Patagonia through a time travel of millions of years into the past.

### The beginnings of the Museum

The Museum opened its doors on December 28, 1990 in a modest house: an old furniture retail store of 700 square meters. At that time worked only three people, the director, a paleontological technician and an administrative employee. But the interest of scientists and neighbors make possible a sustained growth of the new museum. They had a great desire to stimulate and developed research in the region! In the search for new resources that enable the achievement of this new objective, in 1990, the Egidio Feruglio Foundation was born. The Foundation, together with the National Council of Scientific and Technical Research (CONICET) and the Municipality of Trelew, constitute the institutional support of the MEF, with a non-government organization management. Soon after, the Provincial Tourism Authority declares "Provincial Tourist Interest" the new museum and an agreement authorizing the MEF to develop prospecting, extraction, recovery and touristic value of the paleontological heritage of the Province of Chubut was signed. Since then, the work of its researchers placed the MEF as a leader in the field of Paleontology in Patagonia.







## Trelew

Trelew is located near the Atlantic coast and has nearly 100,000 inhabitants. It was founded on October 20 1886, by the Welsh settlers in Patagonia. The city is named after Lewis (Luis) Jones (Trelew= Tre--town in Welsh—and Lew—an apocope for Lewis—meaning “the town of Lewis) and still preserves to the day, together with its surrounding townships and villages (like Gaiman) the Welsh heritage.

Trelew is one of the most important commercial and industrial centers of the region.

Trelew is the main airport connection between Chubut Province and the capital Buenos Aires, via the Almirante Marcos A. Zar Airport (REL).

Thus, Trelew represents as well a touristic crossroad to the Andes Cordillera to the west, the Puerto Madryn and Peninsula Valdés (wildlife reserve) to the north, and Punta Tombo (biggest penguin reserve in South America).



Trelew



Gaiman



Puerto Madryn



Guanacos



Penguins



Sea Lions



Chubut River, typical landscape

## Travelling to Trelew

The best way to reach Trelew is by plane. Trelew has an International Airport, called the Almirante M. A. Zar Airport (code: REL), with a newly-renovated Boeing 707 runway.

<http://www.aeropuertotrelew.com/en/>

There are several connections with direct flights between the Argentine capital, Buenos Aires and Trelew, from all three airports of the capital, Ezeiza International Airport (EZE), J. Newberry Aeroparque International Airport (AEP), and El Palomar (EPA). The total flight time between Buenos Aires and Trelew is appr. 2 hours.

Aerolineas Argentinas usually operates the flights from EZE and AEP (please consult availability at <https://www.aerolineas.com.ar/>), whereas EPA operates with low-cost companies (e.g., <https://flybondi.com>). In later circulars we will be able to provide more specific and up-to-date details about the flights.

Besides, Trelew Airport has direct flights (during touristic season) to popular southern destinations, including El Calafate (in the Andes and the Perito Moreno Glacier) and Ushuaia (the southernmost city in the world). Therefore, your visit to Trelew and TES can be easily combined with some unique touristic activities.

Besides plane, Trelew can also be reached via bus and car, but be prepared for a long, 24-hour roadtrip!

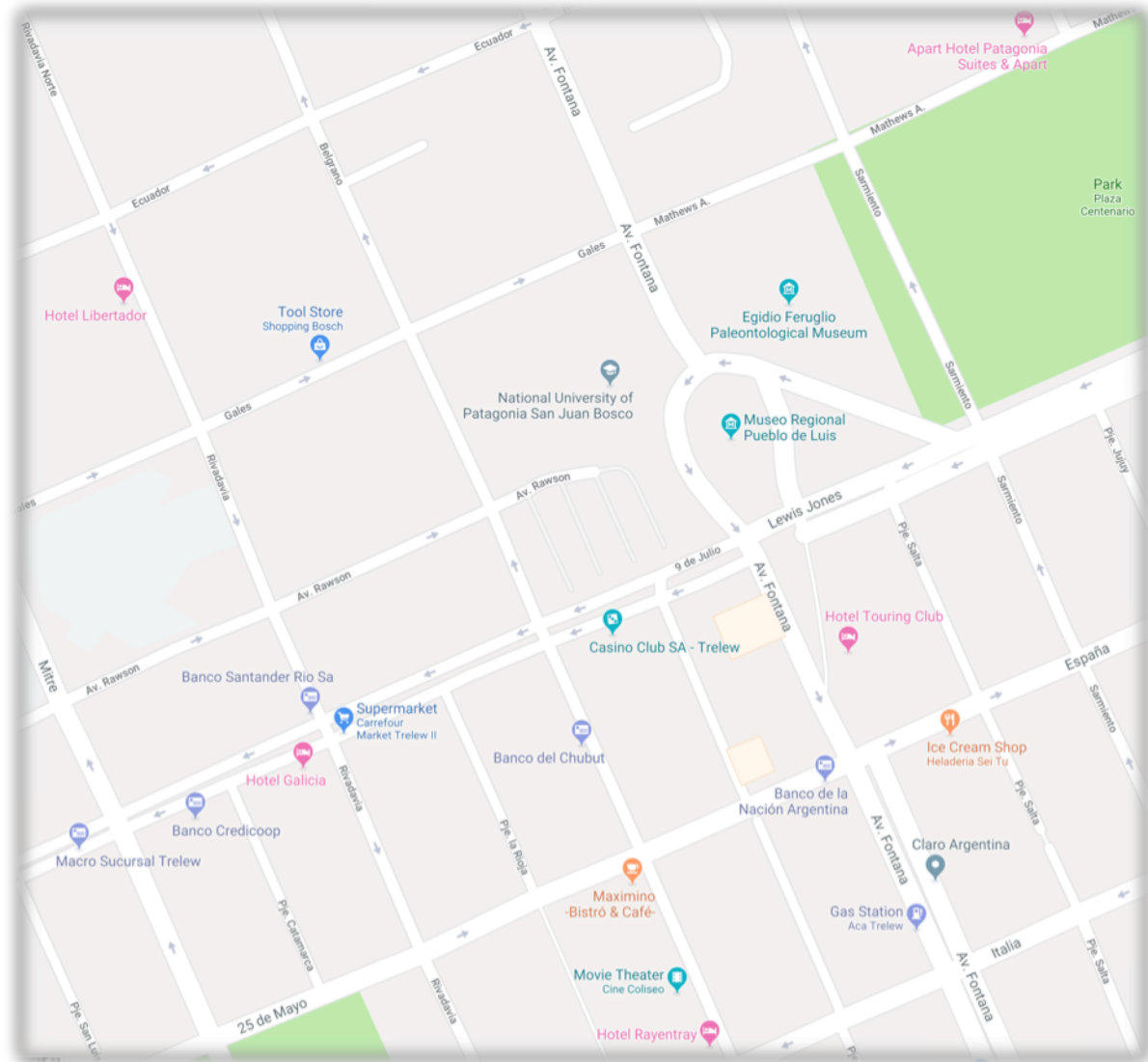
In any case, we are always at your disposal to help you organizing your trip and stay, so please do not hesitate to contact us.

*As a plus, Trelew Airport contains a small exhibition of MEF fossils and other exhibits!*





## Accommodation in Trelew



There are several accommodation options around MEF, including:

Patagonia Suites and Apartments (<https://patagoniansuites.com/>),  
Hotel Libertador (<http://hotellibertador.com.ar/>),  
Hotel Touring Club (<http://touringpatagonia.com.ar/>),  
Hotel Galicia (<https://www.hotelgalicia.com.ar/>), and  
Hotel Rayentray (<http://www.rayentraytrelew.com/>)

all within 5 – 20-minute walking distance from MEF.

Note that in the plans of the ongoing expansion of MEF we are going to have accommodation facilities for students and travelling scientists.